



**SURFACE METALS** <sup>INC</sup>

BUILDING VALUE FROM  
THE GROUND UP

**CORPORATE PRESENTATION**

APRIL 2026

CSE: SUR | US OTCQB: SURMF | FSE: V6X

# SAFE HARBOR AND FORWARD-LOOKING STATEMENTS

**DISCLAIMER:** This presentation contains information, qualifications, and disclaimers to protect the investor or potential investor when reviewing information in this presentation. Investors are urged to review the information on this website in its entirety and be aware that investing in junior mining companies represents considerable risk. Investors are urged to consult investment professionals at all times before making an investment decision. See General Disclaimer.

**GENERAL DISCLAIMER:** In this presentation "SURFACE", "we", "us", "our", and the "Company" all refer to SURFACE Metals Inc. and its subsidiaries. SURFACE has taken all reasonable care in producing and publishing information contained in this presentation and we endeavor to review such information regularly. Material in this presentation may still contain technical or other inaccuracies, omissions, or typographical errors, for which SURFACE assumes no responsibility. SURFACE does not warrant or make any representations regarding the use, validity, accuracy, completeness and reliability of any claims, statements or information in this presentation. Under no circumstances, including, but not limited to, negligence, shall SURFACE be liable for any direct, indirect, special, incidental, consequential, or other damages, including but not limited to, loss of programs, loss of data, loss of use of computer or other systems, or loss of profits, whether or not advised of the possibility of damage, arising from your use, or inability to use, the material in this presentation. This information is not a substitute for independent professional advice before making any investment decisions. Furthermore, you may not modify or reproduce in any form, electronic or otherwise, any information in this presentation, except for personal use unless you have obtained our express permission.

**THIRD PARTY LINKS:** All links or references to other web sites are provided merely as a convenience to the user. SURFACE has no control over the linked or referenced web sites, makes no representation or warranty regarding the completeness, accuracy or currency of the information located on the linked or referenced web sites and does not endorse the linked or referenced web sites or their content.

**FORWARD-LOOKING STATEMENTS:** This presentation contains certain statements which may constitute forward-looking statements, such as estimates and statements that describe our future plans, objectives or goals, including words to the effect that we expect or management expects a stated condition or result to occur. Such forward-looking statements are made pursuant to the safe harbor provisions of the United States Private Securities Litigation Reform Act of 1995.

Since forward-looking statements address future events and conditions, by their very nature

they involve inherent risks and uncertainties. The following list is not exhaustive of the factors that may affect any of our forward-looking statements. These and other factors should be considered carefully and readers should not place undue reliance on our forward-looking statements.

Actual results relating to exploration, mine development, mine construction, mine operation, and mine reclamation related to projects could vary materially from those expectations. Capital costs and operating costs could vary materially from those expectations. Resource and reserve calculations could vary materially from those expectations. Reason or factors that may cause such variability in expected results includes resources and reserves differing from expectations, changes in general economic conditions and conditions in the financial markets, changes in demand and prices for the products that may be produced. Other factors may include litigation, legislative, environmental and other judicial, regulatory, political and competitive developments in domestic and foreign areas in which we operate, technological and operational difficulties encountered, productivity of our resource properties, changes in demand and prices for minerals, labor relations matters, labor, material, and supply costs, and changing foreign exchange rates. This list is not exhaustive of the factors that may affect any of our forward-looking statements. These and other factors should be considered carefully and readers should not place undue reliance on our forward-looking statements.

Further information regarding these and other factors is included in our filings with the Canadian provincial securities regulatory authorities (which may be viewed at [www.sedar.com](http://www.sedar.com)).

**CAUTIONARY NOTE TO INVESTORS CONCERNING ADJACENT PROPERTIES:** This presentation contains information about adjacent properties on which we have no right to explore or mine. Investors are cautioned that mineral deposits on adjacent properties are not indicative of mineral deposits on our properties.

**CANADIAN NATIONAL INSTRUMENT 43-101 GUIDE QUALIFIED PERSON:** Mineral Resource and Mineral Reserve estimates and resulting Technical Reports must be prepared by or under the direction of, and dated and signed by, a Qualified Person. A Qualified Person ("QP") means an individual who is an engineer or geoscientist with at least five years of experience in mineral exploration, mine development or operation or mineral project assessment, or any combination of these; has experience relevant to the subject matter of the mineral project and the technical report; and is a member or licensee in good standing of a professional association.



# BUILDING VALUE FROM GROUND UP

At Surface Metals Inc., the building blocks for the future are our focus today. We have one of the best portfolios of Nevada-based projects in areas known for production, development and exploration of gold and lithium. Surface Metals holds a 90% interest in the Cimarron Gold Project in Nye County Nevada, and through its US subsidiary, ACME Lithium US Inc., is advancing and developing a lithium brine resource at Clayton Lake Valley, Nevada. Surface Metals also holds a sedimentary lithium claystone project at Fish Lake Valley, Nevada.

## FAVORABLE JURISDICTION



- Mature mining framework: Nevada has a long history of mining operations with many projects in advanced stages of exploration or in operation.
- Top-tier infrastructure with easy access available throughout Nevada, with year-round operations.
- Low geo-political risk, mining-friendly.

## QUALITY PORTFOLIO



- Strong portfolio of Nevada-based projects in areas known for production, development and exploration.
- Situated in the prolific Walker Lane Au Trend, Cimarron is an established project next to the historic San Antonio mine.
- Surface Metals is advancing and developing a lithium brine resource within the well-known Clayton Valley.

## THE RIGHT MARKET



- In 2026, gold values soared to record highs at over \$5,500 per ounce. Market analysis suggest the bullish gold market may extend past 2027.
- Resurgence in lithium prices is already underway as of early 2026.



# SURFACE METALS PROJECT AREAS

## NEVADA

### GOLD

#### CIMARRON, NYE COUNTY

Cimarron represents a highly prospective exploration and development project opportunity. Historic drilling by previous operators outlined a gold resource (non NI 43-101 compliant)\*, with strong potential for expansion at depth and evaluation of additional mineralized zones.

### LITHIUM

#### CLAYTON VALLEY

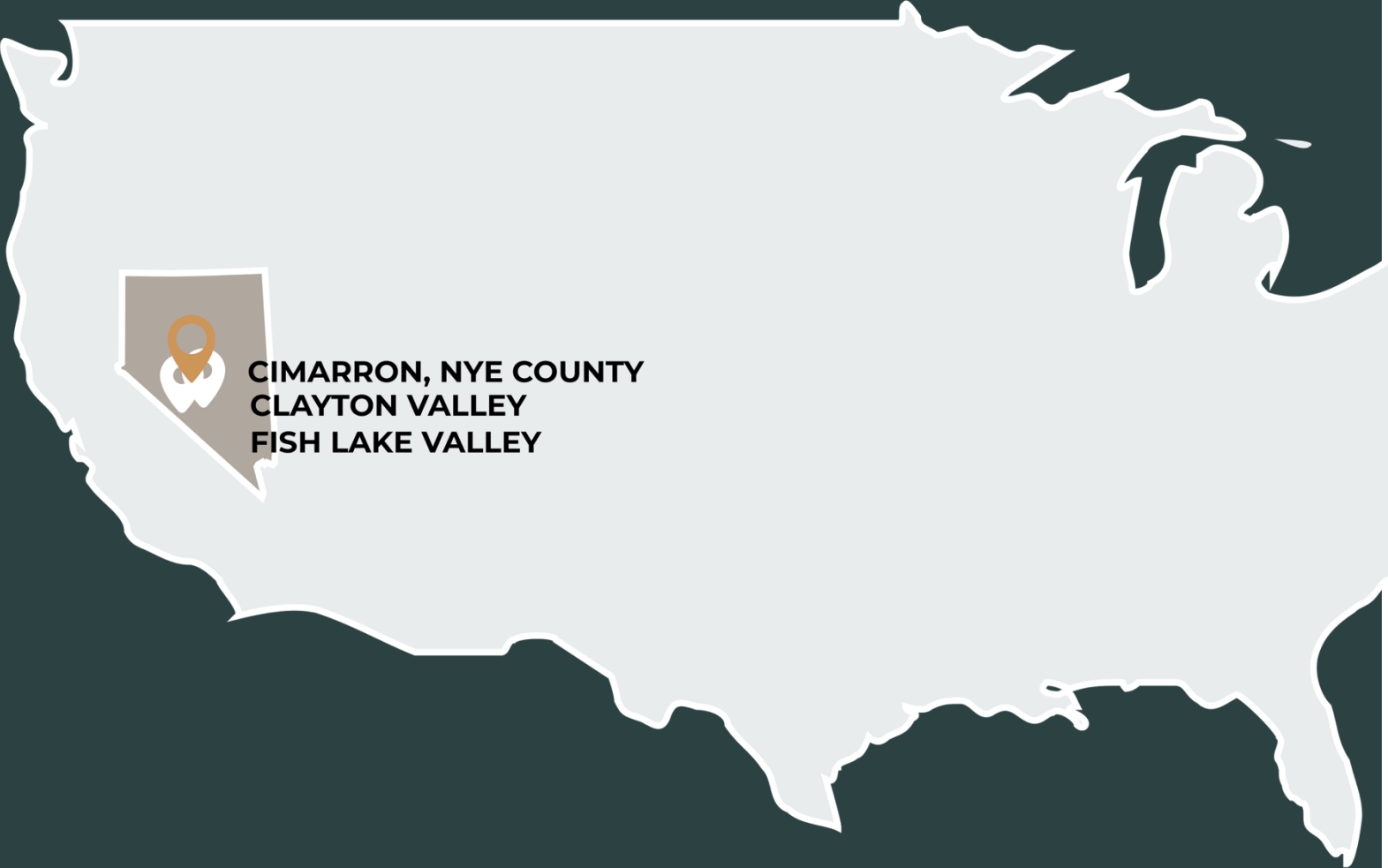
Comprised of 122 claims totalling 2,440 acres held or under option to acquire 100%, the Clayton Valley Lithium Project hosts a lithium brine resource exceeding 300,000 tons of LCE (NI 43-101 compliant) at Silver Peak, Esmeralda County. The project is directly adjacent to Albermarle's established Silver Peak Mine brine operations.

### LITHIUM

#### FISH LAKE VALLEY

Surface Metals holds a 100% interest in this sedimentary lithium claystone project, consisting of 82 mining claims held, totalling approximately 1694 acres. Drill ready, sampling has returned values of over 1,400 ppm, highlighting the properties potential.

\* See slide 2 regarding Cimarron's historic information and resources that are not yet NI 43-101 compliant 4



# GOLD – A GENERATIONAL OPPORTUNITY



Historic bull market with gold reaching over US\$5,500 per ounce January 2026.



Financial analysts predict gold to continue to soar, exceeding US\$6,000 by end of 2026.



Inflation, government debt, tariff policies, decreasing interest rates, and global unrest all contribute to investors wanting to seek the value and safety of gold.



Record central bank buying and investor purchasing are reinforcing structural, long-term demand for gold.

## ANALYSTS WITH POSITIVE FORECASTS INCLUDE:



Deutsche Bank

J.P.Morgan

“JP Morgan said ...it expects demand from central banks and investors to drive gold prices to \$6,300 per ounce by year-end.”

- Reuters, Feb. 2026

Article ‘JP Morgan sees gold at \$6,300 an ounce by year-end on robust central-bank, investor demand’

Goldman Sachs

“Gold remains our highest-conviction long recommendation.”

- Goldman Sachs, Sept. 3, 2025

# NEVADA PROJECTS

## CIMARRON GOLD PROJECT

CIMARRON is located at the north end of the San Antonio Mountains in the historic San Antonio (Cimarron) Mining District, approximately eighteen miles north of the town of Tonopah, in Nye County, Nevada.

### PROJECT HIGHLIGHTS:

- The Project includes an extensive historic record of drill results (190 holes), which outlined a historic gold resource of approximately 50,000 ounces (Non NI 43-101 compliant)
- Historic high-grade intercepts included 11 meters of 4.46 g/t gold, 23 m of 4.49 g/t gold and 46 m of 3.94 g/t gold
- The Project has good access and a number of drill sites already built
- Mineral intercepts remain open in several directions
- The target is a shallow, low-sulfidation oxide gold system with strong structural control.



SURFACE METALS™



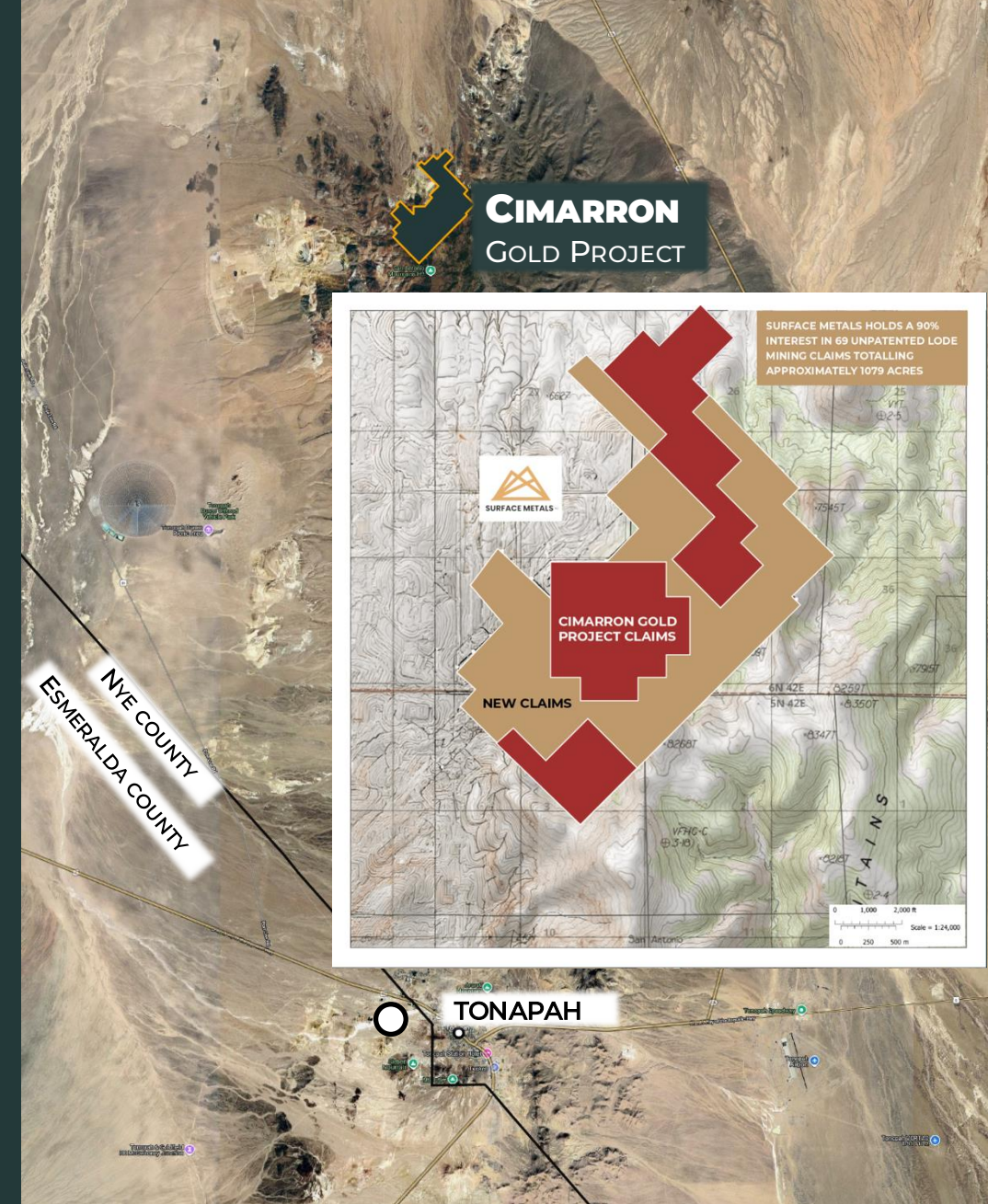
# CIMARRON REGIONAL LOCATION

- The Cimarron Gold Project is in the prolific Walker Lane epithermal gold-silver trend that runs NW along the Nevada-California border
- Cimarron is situated at the intersection of a secondary NNE structural trend that hosts a series of gold mines including Manhattan, Goldfields, and the Kinross world class Round Mountain located 28 miles (45 km) north
- Kinross has recorded over 15 million ounces of gold poured (as of 2021) worth over US\$55 Billion at current gold prices
- Over 40 million ounces of gold has been produced regionally



# CIMARRON PROJECT

- Located at the north end of the San Antonio Mountains in the historic San Antonio Mining District, approximately 18 miles north of the town of Tonopah, in Nye County, Nevada.
- Comprised of 69 unpatented lode mining claims, covering approximately 1079 acres.
- Covers a structurally controlled, volcanic hosted epithermal, disseminated gold system.
- Historical drill campaigns, primarily in the 1980s provide an extensive historic record of drilling results (230+ DHs) totaling over 18,000 meters. The drilling has been for the most part focused and shallow, with an average depth of 77 meters or approximately 250 feet.
- Extensive geologic mapping, surface and underground sampling has been completed (800+ surface and underground samples).
- Historic high-grade intercepts included 11 m of 4.46 g/t Au, 23 m of 4.49 g/t Au and 46 m of 3.94 g/t Au.
- Mineralized intercepts remain open at depth, as well as possible expansion in several directions.

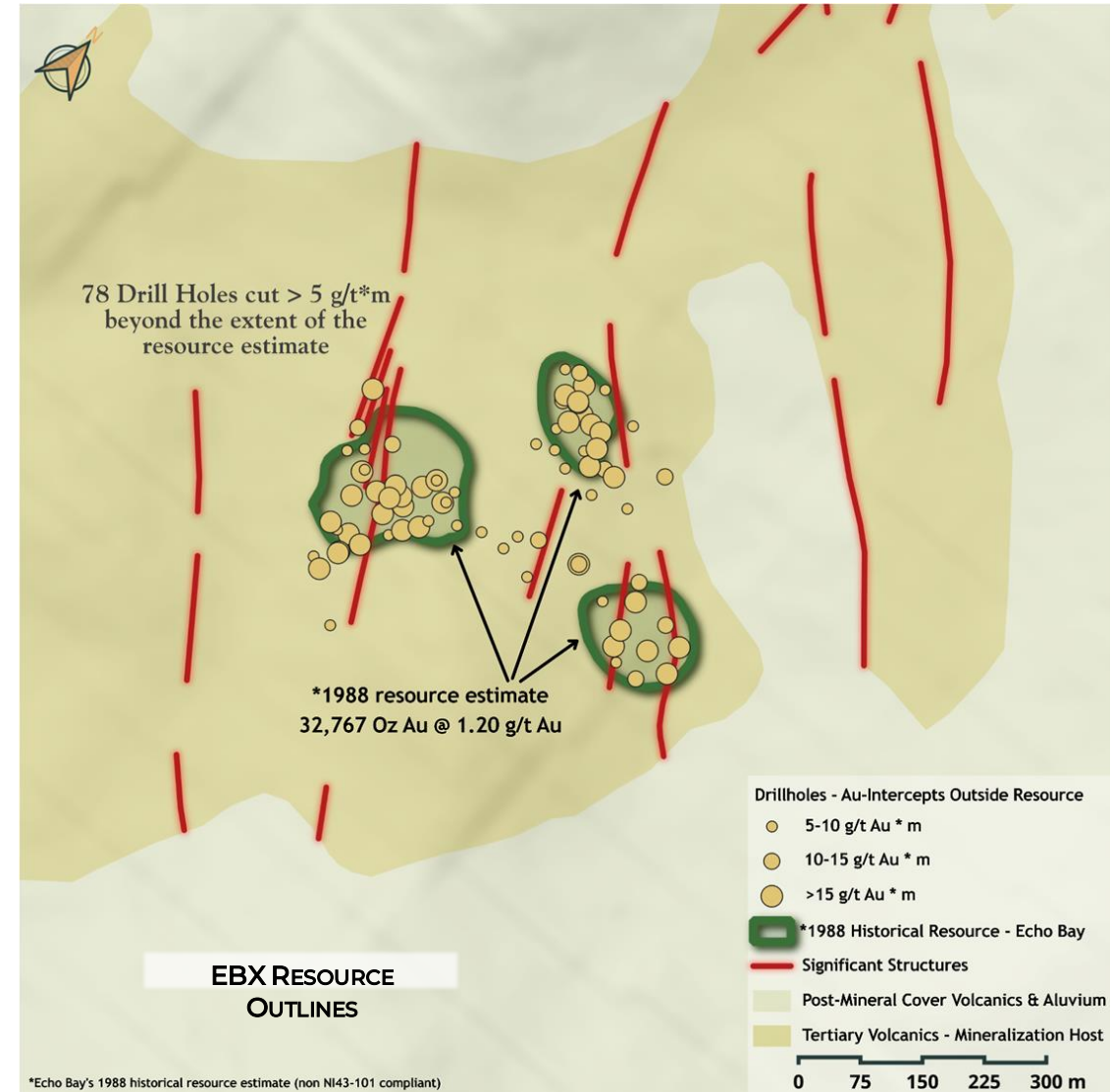


# CIMARRON – HISTORIC RESOURCE

- Exploration efforts in the 1980s led to the identification of gold mineralization in three zones (West, East, and Central Zones) surrounding the Cimarron Mine, with surface and underground assays reporting gold values up to 107 g/t.
- Budge Exploration acquired the property in 1986 and drilled 54 holes, resulting in an internal resource of over 50,000 ounces of gold at 0.034 (1.5Mt of material) from the 3 zones.<sup>1</sup>
- Echo Bay Exploration (EBX) optioned the property in 1988, drilled an additional 98 holes, converted to a pit constrained gold resource of 32,767 ounces at 1.20 g/t (0.035 opt, 0.94Mt).<sup>2</sup>
- 78 holes intersect significant gold outside the EBX pit resource envelope, with 65 holes terminating in Au mineralization.
- There is no technical report to support these historical estimates. These estimates and are not to be treated as current and shall be considered non-NI43-101 compliant.

1. Internal Memo. "Cimarron, Nye County, Nevada: Review of 1986 work and recommendations for work in 1987", Peter H. Hahn, February 1987

2. "Summary Report, Cimarron Project, Nye County, Nevada", N.H. Brewer, Echo Bay Exploration, January 1988



# TABLE 1 – CIMARRON GOLD

## HISTORIC HIGH GRADE ROCK CHIP SAMPLES

Area	Gold Grade grams/tonne	Area	Gold Grade grams/tonne
Cimarron	106.7	North	16.8
Cimarron	21.9	Breccia	29.2
Cimarron	16.3	West Adit	10.1
Cimarron	9.9	West Adit	12.0
CO8	53.5	West Adit	30.2
CO8	9.2	CO8	8.9

(Bullion River Gold Corp. Fact Sheet, 2004)

Note: these are historic samples taken and reported by previous operators, Surface Metals has not verified the accuracy thru additional independent lab testing



# TABLE 2 – CIMARRON GOLD

## SELECTED DRILL INTERCEPTS IN RESOURCE AND TARGET AREAS

Resource Area	Hole	Interval meters	Intercept meters	Au grade g/t	Company
Cimarron East	EB-91	0-11	11	4.46	Echo Bay
Cimarron East	EB-86	10-40	30	2.59	Echo Bay
Cimarron East	EB-30	39-83	44	0.9	Echo Bay
Cimarron East	RCM-242	44-67	23	1.06	Romarco
Cimarron East	RCM-27	43-53	10	2.4	Romarco
Cimarron West	EB-23	45785	3	50.7	Echo Bay
Cimarron West	RCM-270	20-50	30	1.18	Romarco
Cimarron West	c-12	28-51	23	4.49	Newmont
Cimarron West	C-28	0-7	7	5.31	Newmont
Cimarron West	c-92	15-61	46	3.94	Newmont
CO8	RCM-254	60-69	9	4.075	Romarco
North Breccia	RCM-267	18-27	9	1.267	Romarco

(Bullion River Gold Corp. Fact Sheet, 2004)

Note: these are historic drill samples taken and reported by previous operators, Surface Metals has not verified the accuracy thru additional drilling or independent lab testing





# OUTLOOK - CIMARRON

- Further evaluate the extent of mineralization beneath post-mineral cover with surface mapping and geochemical sampling. Limited testing has demonstrated the system remains open along strike and at depth.
- **Execute a focused drill program to test known targets**, evaluating both lateral and depth extensions of the known mineralized zone.
- Confirm and calculate an updated and potential increased resource
- Assess potential to expand and better define mineralization within and surrounding the project area.

## QUALIFIED PERSON

Scientific and technical information contained in this document has been reviewed and approved by Doug Murray CPG, who is a “Qualified Person” as defined by National Instrument 43-101 – Standards of Disclosure for Mineral Projects (“NI 43-101”).

## REFERENCES

Brewer, N.H., 1988, Summary Report: Cimarron Project, Nye County, Nevada

Echo Bay Exploration Internal Company Report, 16 p.

Bullion River Gold Corp., Feb. 2004, Acquisition of Cimarron Mineral Exploration Project – Press Release and Information Fact Sheet.

Hahn, P.H., 1987, Cimarron, Nye County, Nevada: Review of 1986 Work and recommendations for work in 1987

A.F. Budge Internal Company Report, 10 p.

Romarco Minerals Inc, 1996, Annual Report, p. 16.



# LITHIUM

## NEVADA PROJECTS

Esmeralda County, Nevada, is the epicenter of lithium exploration and development in the United States.

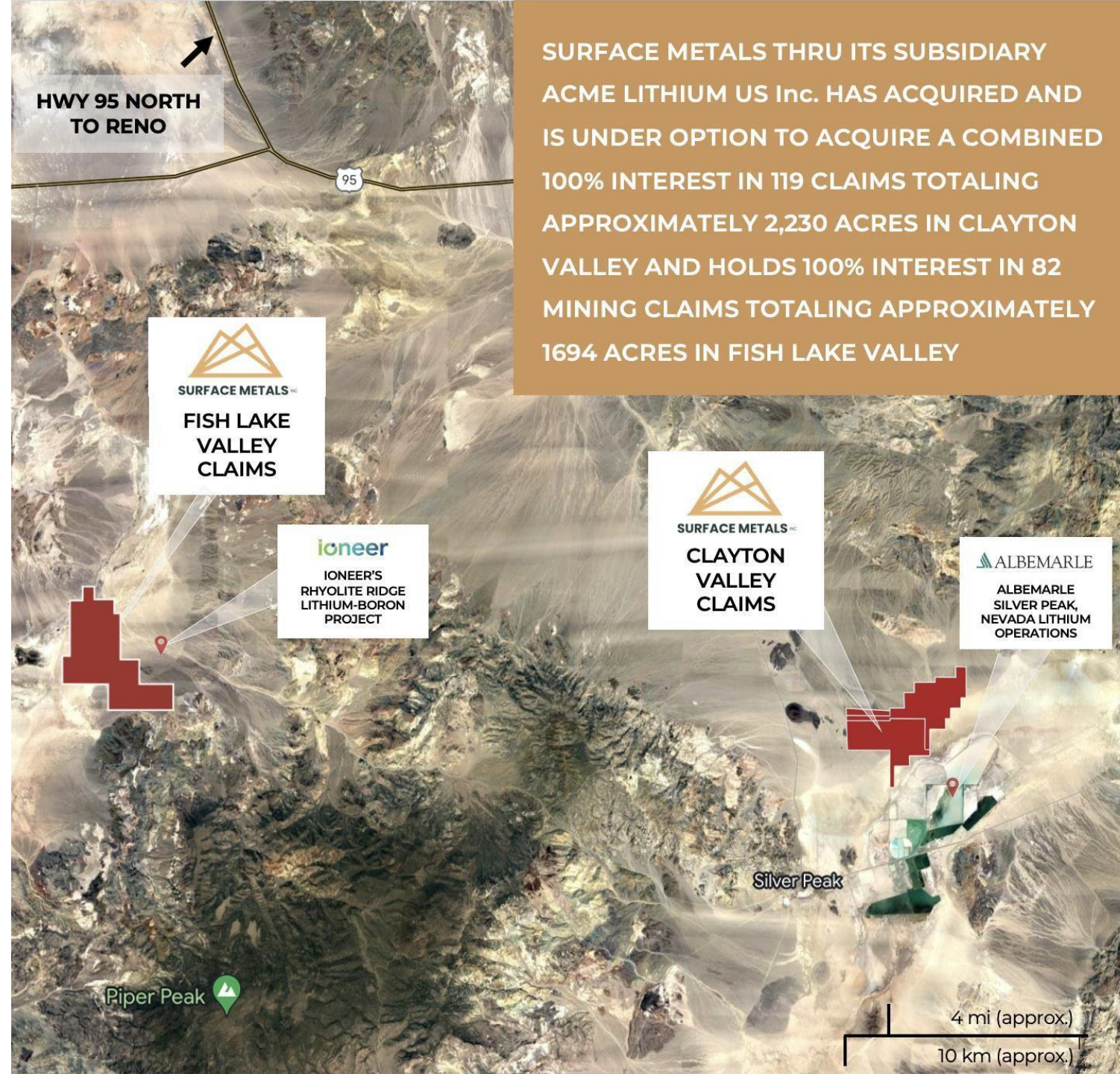
### PROJECT HIGHLIGHTS:

- Surface Metals through its subsidiary ACME Lithium US Inc. ("ACME") has acquired, or is under option to acquire a combined 100% interest in 122 claims totaling 2,440 acres in Clayton Valley and holds 100% interest in 82 mining claims totaling approximately 1,694 acres in Fish Lake Valley
- Nevada is the best mining jurisdiction in America with neighboring world class lithium projects in the region
- Access to expertise, infrastructure, rail and roads, power and water
- Excellent weather, logistics, and access year-round
- Tesla's Gigafactory less than 200 miles northwest



# BUILDING VALUE FROM GROUND UP

- Surface Metals' Clayton Valley project neighbors the Silver Peak lithium mine owned and operated by one of largest lithium producers in the world, Albemarle Corporation (NYSE:ALB)
- Silver Peak is the only current lithium production in the U.S. where lithium has been continuously produced from brines since 1966
- Surface Metals' Fish Lake Valley project neighbors Ioneer Corporation's (ASX:INR) Rhyolite Ridge, a world class lithium clay mining project set to go into construction in 2025.



SURFACE METALS THRU ITS SUBSIDIARY ACME LITHIUM US Inc. HAS ACQUIRED AND IS UNDER OPTION TO ACQUIRE A COMBINED 100% INTEREST IN 119 CLAIMS TOTALING APPROXIMATELY 2,230 ACRES IN CLAYTON VALLEY AND HOLDS 100% INTEREST IN 82 MINING CLAIMS TOTALING APPROXIMATELY 1694 ACRES IN FISH LAKE VALLEY

HWY 95 NORTH TO RENO

95



SURFACE METALS

FISH LAKE VALLEY CLAIMS

ioneer

IONEER'S RHYOLITE RIDGE LITHIUM-BORON PROJECT



SURFACE METALS

CLAYTON VALLEY CLAIMS

ALBEMARLE

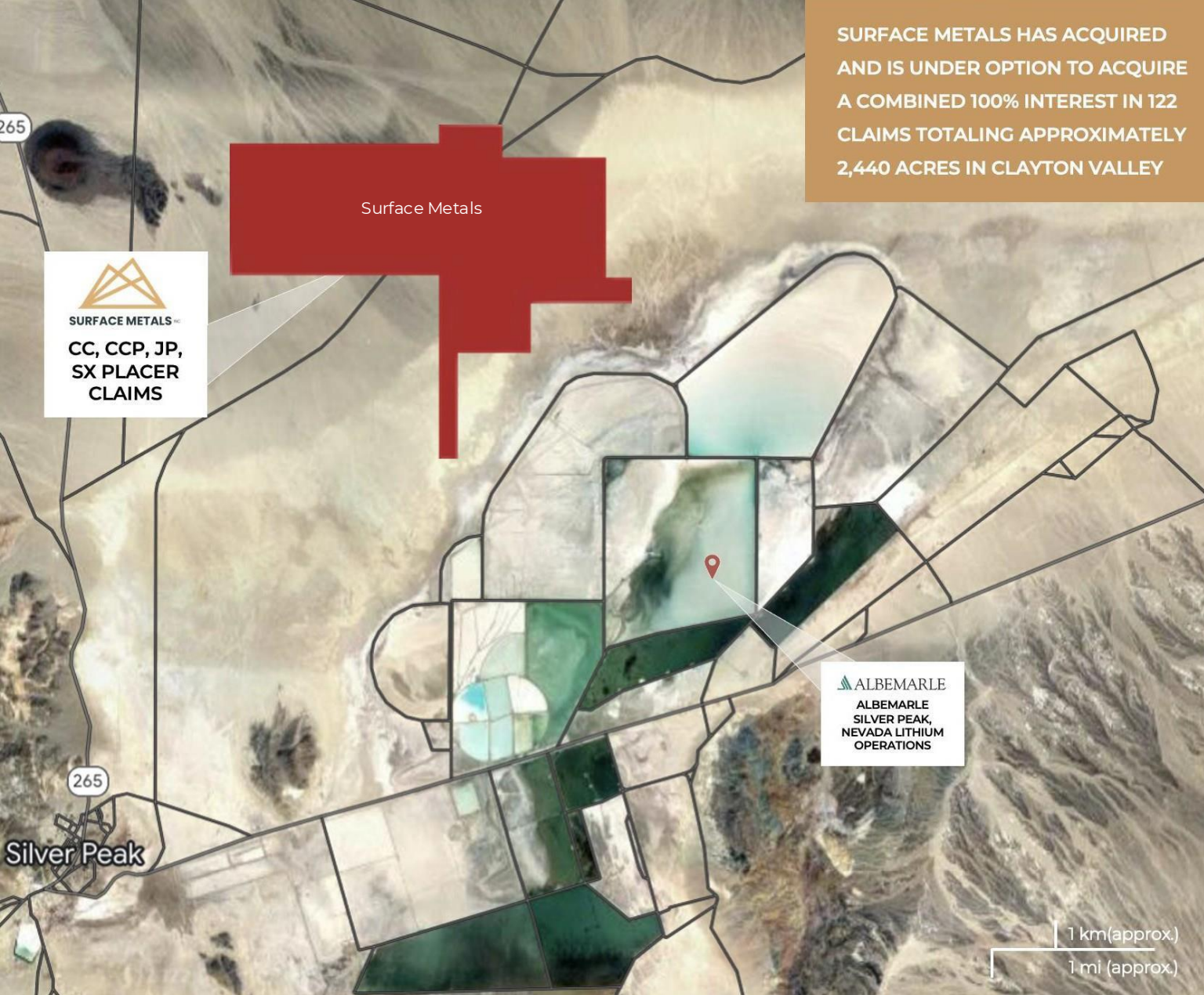
ALBEMARLE SILVER PEAK, NEVADA LITHIUM OPERATIONS

Silver Peak

Piper Peak

4 mi (approx.)

10 km (approx.)



SURFACE METALS HAS ACQUIRED AND IS UNDER OPTION TO ACQUIRE A COMBINED 100% INTEREST IN 122 CLAIMS TOTALING APPROXIMATELY 2,440 ACRES IN CLAYTON VALLEY

# CLAYTON VALLEY, NEVADA LITHIUM PROJECT OVERVIEW

- NI 43-101 report estimates an inferred lithium carbonate equivalent (LCE) resource of approximately 302,900 metric tons (units rounded)
- Surface Metals' CC, CCP, JR, and SX Placer Claims in Clayton Valley are found in an area with a rich history and promising future
- The claims cover basin-fill sediments and aquifers similar to sediments currently producing lithium brines in the region
- Extensive valley growth faults may provide an adequate plumbing system to foster brine reservoir accumulation for moving fluids around

# PHASE 1 DRILL PROGRAM AT CLAYTON VALLEY, NV

In June 2022, Surface Metals' launched a Phase 1 Drill Program in Clayton Valley. Harris Drilling Exploration and Associates Inc. was contracted to provide drilling services based on prospective lithium brine targets defined by geophysical work in the Fall of 2021.

Phase  
1

**PROSPECTIVE BASIN SEDIMENTS HAVE BEEN ENCOUNTERED AND DELINEATED AS HIGHLY PROBABLE FOR AQUIFER UNITS**

1,250  
feet

**TARGETED BASAL GRAVEL AQUIFER DEPTH BELOW GROUND SURFACE, WITH MULTIPLE PRODUCTIVE HORIZONS INTERSECTED FOR SAMPLE BRINE COLLECTION**

1,400  
feet

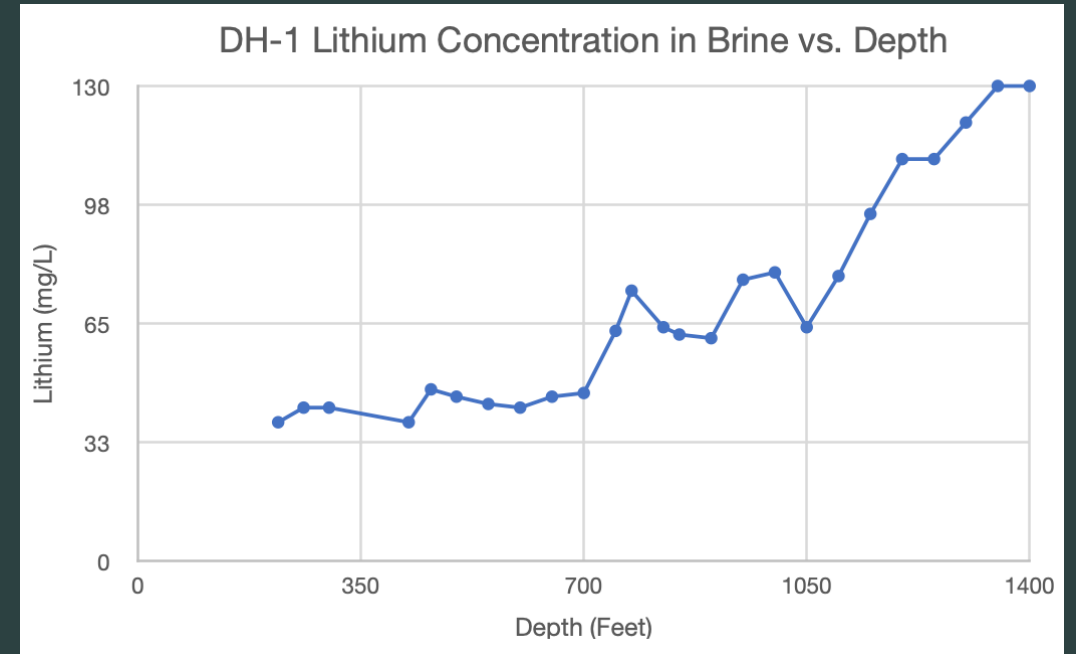
**DRILL HOLE DH-1 DEPTH BELOW GROUND SURFACE; CORE IS CONSISTENT WITH KNOWN BASIN STRATIGRAPHY**

# SIGNIFICANT DISCOVERY AT CLAYTON VALLEY, NV

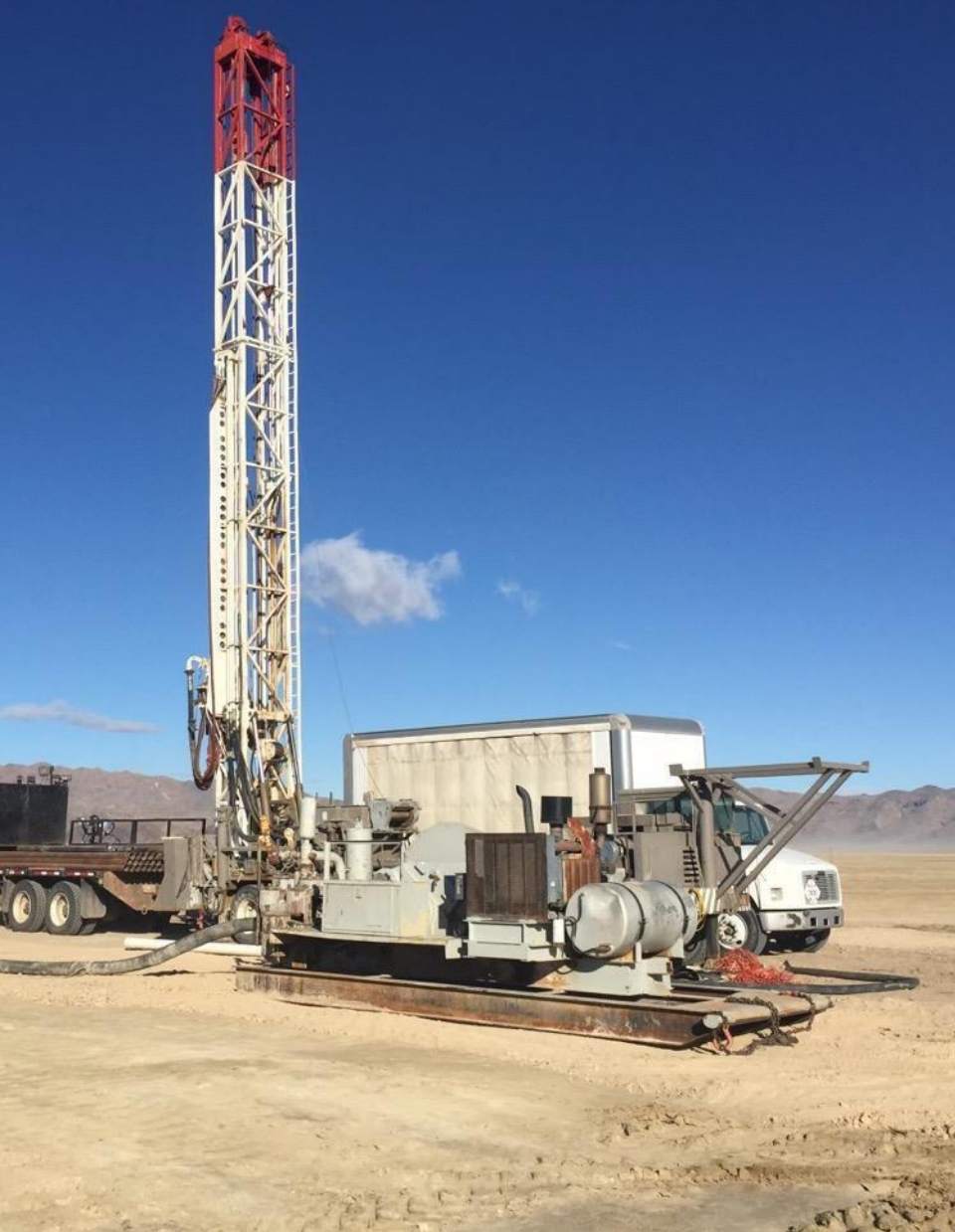
Positive results have been reported following the analysis of brine samples taken from the Phase 1 Drill Program.

## KEY FINDINGS:

- Lithium detected at concentrations ranging between 38 and 130 mg/L
- Results strongly indicate existence of a bicarbonate-rich groundwater quality affinity, which is typical in Clayton Valley lithium brine aquifers
- Lithium concentrations appear to increase in the vicinity of the deeper lacustrine tuff unit and in deep gravels underlying the tuff near the bottom of the DH-1



**SAMPLES OF BRINE TAKEN FROM DH-1 AT VARIOUS INTERVALS WERE SENT TO AN INDEPENDENT LAB AND ANALYZED FOR LITHIUM AND OTHER ELEMENTS TYPICAL OF LITHIUM ENRICHED BRINE SYSTEMS. ASSAY RESULTS INDICATE LITHIUM CONCENTRATIONS LIKELY INCREASE WITH DEPTH AND WITH TEMPERATURE.**



# PHASE 2 DRILL PROGRAM AT CLAYTON VALLEY, NV 2023

## HIGHLIGHTS:

- Exploration hole to examine deeper horizons through zonal isolated testing, assess stratigraphy, and potential for continuity between stratigraphic units encountered in DH-1, as well as a larger diameter test well and planned pumping test
- Successfully completed 10-day pumping test at test well TW-1 and collected a range of brine samples to be submitted for multi-element chemical analyses, which include total and dissolved lithium

## MILESTONES & INITIAL FINDINGS:

- In March 2024, the Company announced its exploration summary and hydrological evaluation report for its Phase 1 and Phase 2 programs at Clayton Valley
- The NI43-101 report estimates an **inferred lithium carbonate equivalent (LCE) resource of approximately 302,900 metric tons** (units rounded) over a 40 year extraction period based on an assessment of potential extractable brine volume which could be pumped from the project over time

# EMERGING TECHNOLOGY

## DIRECT LITHIUM EXTRACTION

DLE is the technology we expect to use at Clayton Valley to process lithium. It is a low-cost and sustainable technology that extracts lithium from brine water.

- DLE is a more efficient process compared to traditional lithium extraction by selectively removing highly pure lithium from brine in a much smaller manufacturing facility that uses less water
- A few different technologies can be used to achieve this: porous materials that allow for lithium bonding, ion exchange, and solvent extraction
- Surface Metals' is developing relationships with companies that have DLE technology
- SLB (formerly Schlumberger) successfully demonstrated a DLE pilot plant near our Clayton Valley Project







# FIELD REVIEW AND SAMPLING AT FISH LAKE VALLEY, NV

Phase 1 and 2 Field Reviews And Sampling indicate a mineral process was active during deposition of the underlying sediments.

## PHASE 2 GEOLOGICAL FIELD WORK

- Launched in Q4 2022 with a focus on traverses along a major drainage area where higher lithium values occurred
- Findings show certain beds are enriched in lithium

## PHASE 2 SAMPLING

- Launched in February 2023, utilizing Asterra's satellite-based technology
- Discovered the highest surface value to date at 1418 ppm and numerous new occurrences of lithium values over 1200 ppm
- Discovered boron anomalies up to 1964 ppm occurring and adjacent to surface lithium anomalies

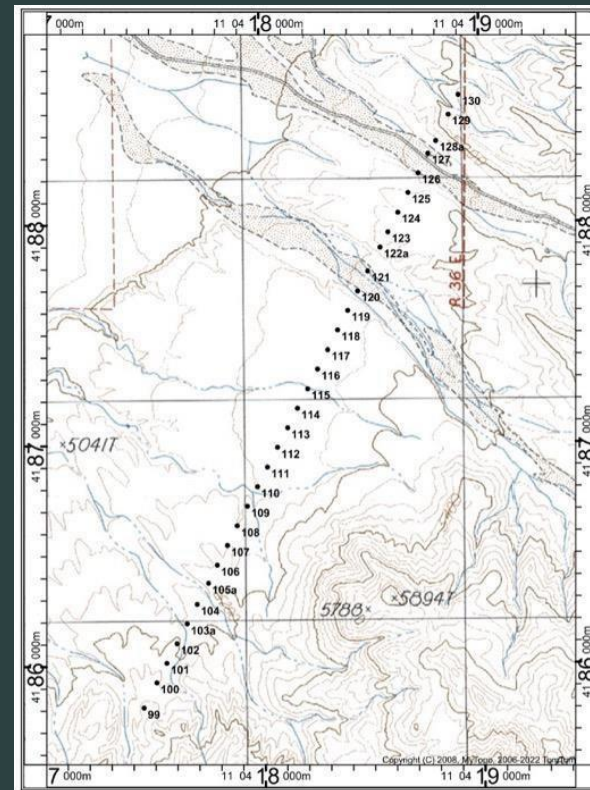
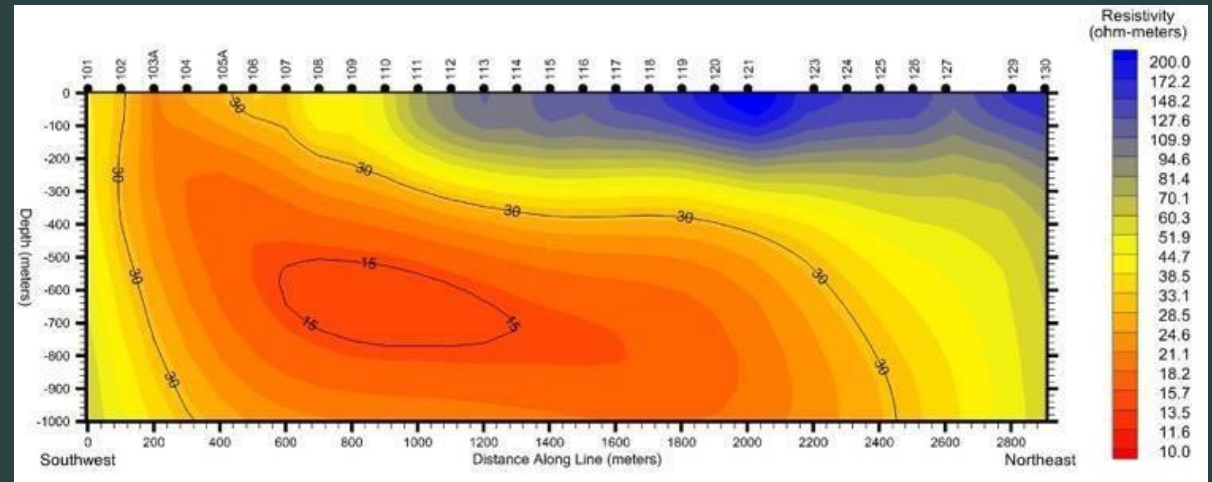


# GEOPHYSICS AND NEXT STEPS AT FISH LAKE VALLEY

Findings indicate the project is drill-ready and drilling has been recommended to determine the relationship between the different interpreted concentrations of clay sediments and the presence of lithium.

## HYBRID-SOURCE AUDIO-MAGNETOTELLURICS SURVEY FINDINGS:

- A basin fault is evident near the southwestern end of the profile, with modeled depths to Paleozoic bedrock ranging from about 1.3 km to 1.9 km
- Moderate to low concentration clay sediments are interpreted to be present at the surface near the southwestern basin fault that deepen to about 300 meters and extend beyond a depth of one km over about 80% of the profile
- Higher concentration clay sediments are interpreted over about 700 meters with depths ranging from about 500 to 750 meters



**GRAVITY SURVEY  
INDICATES PRESENCE OF  
A DOWN-DROPPED BASIN  
WITH INTERPRETED  
TARGET CLAY SEDIMENTS  
POTENTIALLY TARGETING  
SIMILAR ILLITE-SMECTITE  
UNITS IDENTIFIED IN THE  
NEARBY RHYOLITE RIDGE  
LITHIUM DEPOSIT**

# MANAGEMENT TEAM & ADVISORY BOARD

---

**STEPHEN HANSON**  
**DIRECTOR, PRESIDENT AND**  
**CEO**

Over 30 years of finance and corporate development experience across four continents, has held executive (CEO), board and advisor positions for numerous private and public companies in mining, alternative energy, oil and gas sectors. He has been involved in a number of successful M&A transactions including exit strategies with major corporations.

**VIVIAN KATSURIS**  
**DIRECTOR**

A specialist in corporate development, management, consulting, and corporate services. Has over 30 years of financial experience in the brokerage industry, the North American capital markets and public financings; holds director and officer positions with several CSE and TSXV listed companies.

**YANNIS TSITOS**  
**DIRECTOR**

Originally a physicist-geophysicist with over 30 years of experience in the mining industry, including 19 years with BHP Billiton group, one of the biggest mining companies in the world. Currently the President of Meta Critical Minerals Inc., a TSXV listed company and sits on several boards as an independent director.

**ZARA KANJI**  
**CHIEF FINANCIAL OFFICER AND**  
**CORPORATE SECRETARY**

Experienced in financial reporting compliance for junior listed companies, taxation, general accounting, financial reporting and value added advisory services for individuals, private and public companies. A member of the Chartered Professional Accountants of BC and Canada.

**WILLIAM FEYERABEND**  
**QUALIFIED PERSON FOR US PROJECTS (QP)**

A Certified Professional Geologist and a member of the American Institute of Professional Geologists with direct working experience in the exploration and development of lithium projects, including technical reports in Nevada. Has worked on projects in American West, Mexico and South America.

**DOUG MURRAY P. GEO.**  
**TECHNICAL ADVISOR**

A Professional Geoscientist registered with the Association of Engineers and Geoscientists of the Province of British Columbia with mineral exploration experience across the United States, Canada, Mexico, Guatemala and Peru. Extensive experience in geological mapping, drill program design and working on early stage projects across a variety of deposit types.

**MATT BANTA, PH**  
**TECHNICAL ADVISOR**

Over 20 years of technical and professional experience in groundwater and surface water resource investigations, inventories, water development projects, testing, and resource management with focus on lithium brine, open pit, and underground mining projects.

# INVESTMENTS HIGHLIGHTS

---

## **EXTENSIVE PORTFOLIO OF MULTIBILLION DOLLAR OPPORTUNITIES**

in growing mining sectors

## **EPICENTER OF EXPLORATION & DEVELOPMENT**

with multiple projects in known regions of gold  
and lithium production and development:  
Nevada, U.S

## **EXPLORATION TO DISCOVERY TO RESOURCE**

Drill ready projects with positive geophysical and  
geological attributes, NI 43-101 lithium resource

## **EXPERIENCED MANAGEMENT TEAM**

who have built and financed  
resource companies around the world

# CAPITAL OVERVIEW

CSE	SUR
OTCQB	SURMF
SHARES ISSUED AND OUTSTANDING	45,359,245
WARRANTS	15,109,334
OPTIONS	3,108,333
FULLY DILUTED	63,576,912

## LEGAL

Owen Bird Law Corporation  
Bentall 3 Suite 2900, 595 Burrard Street  
Vancouver, BC Canada V7X 1J5

## AUDITOR

Charlton & Company,  
Chartered Professional Accountants  
Suite 1735 – 555 Burrard Street  
Vancouver, BC Canada V7X 1M9

## TRANSFER AGENT

Odyssey Trust Company  
323 – 409 Granville Street  
Vancouver, BC Canada V6C 1T2

# CONTACT US

---

**1-604-564-9045**

**INFO@SURFACEMETALS.COM**

**SURFACE METALS INC.**

318 – 1199 WEST PENDER ST

VANCOUVER, BC

V6E 2R1

**ACME LITHIUM US INC.**

318 N CARSON ST #208

CARSON CITY, NV

89701 USA

**CSE: SUR | OTCQX: ACLHD | FSE: V6X**

