



**SURFACE METALS** INC

BUILDING VALUE FROM  
THE GROUND UP

**CORPORATE PRESENTATION**

NOVEMBER 2025 | CSE: SUR | US OTCQB: SURMF

# SAFE HARBOR AND FORWARD-LOOKING STATEMENTS

**DISCLAIMER:** This presentation contains information, qualifications, and disclaimers to protect the investor or potential investor when reviewing information in this presentation. Investors are urged to review the information on this website in its entirety and be aware that investing in junior mining companies represents considerable risk. Investors are urged to consult investment professionals at all times before making an investment decision. See General Disclaimer.

**GENERAL DISCLAIMER:** In this presentation "SURFACE", "we", "us", "our", and the "Company" all refer to SURFACE Metals Inc. and its subsidiaries. SURFACE has taken all reasonable care in producing and publishing information contained in this presentation and we endeavor to review such information regularly. Material in this presentation may still contain technical or other inaccuracies, omissions, or typographical errors, for which SURFACE assumes no responsibility. SURFACE does not warrant or make any representations regarding the use, validity, accuracy, completeness and reliability of any claims, statements or information in this presentation. Under no circumstances, including, but not limited to, negligence, shall SURFACE be liable for any direct, indirect, special, incidental, consequential, or other damages, including but not limited to, loss of programs, loss of data, loss of use of computer or other systems, or loss of profits, whether or not advised of the possibility of damage, arising from your use, or inability to use, the material in this presentation. This information is not a substitute for independent professional advice before making any investment decisions. Furthermore, you may not modify or reproduce in any form, electronic or otherwise, any information in this presentation, except for personal use unless you have obtained our express permission.

**THIRD PARTY LINKS:** All links or references to other web sites are provided merely as a convenience to the user. SURFACE has no control over the linked or referenced web sites, makes no representation or warranty regarding the completeness, accuracy or currency of the information located on the linked or referenced web sites and does not endorse the linked or referenced web sites or their content.

**FORWARD-LOOKING STATEMENTS:** This presentation contains certain statements which may constitute forward-looking statements, such as estimates and statements that describe our future plans, objectives or goals, including words to the effect that we expect or management expects a stated condition or result to occur. Such forward-looking statements are made pursuant to the safe harbor provisions of the United States Private Securities Litigation Reform Act of 1995.

Since forward-looking statements address future events and conditions, by their very nature

they involve inherent risks and uncertainties. The following list is not exhaustive of the factors that may affect any of our forward-looking statements. These and other factors should be considered carefully and readers should not place undue reliance on our forward-looking statements.

Actual results relating to exploration, mine development, mine construction, mine operation, and mine reclamation related to projects could vary materially from those expectations. Capital costs and operating costs could vary materially from those expectations. Resource and reserve calculations could vary materially from those expectations. Reason or factors that may cause such variability in expected results includes resources and reserves differing from expectations, changes in general economic conditions and conditions in the financial markets, changes in demand and prices for the products that may be produced. Other factors may include litigation, legislative, environmental and other judicial, regulatory, political and competitive developments in domestic and foreign areas in which we operate, technological and operational difficulties encountered, productivity of our resource properties, changes in demand and prices for minerals, labor relations matters, labor, material, and supply costs, and changing foreign exchange rates. This list is not exhaustive of the factors that may affect any of our forward-looking statements. These and other factors should be considered carefully and readers should not place undue reliance on our forward-looking statements.

Further information regarding these and other factors is included in our filings with the Canadian provincial securities regulatory authorities (which may be viewed at [www.sedar.com](http://www.sedar.com)).

**CAUTIONARY NOTE TO INVESTORS CONCERNING ADJACENT PROPERTIES:** This presentation contains information about adjacent properties on which we have no right to explore or mine. Investors are cautioned that mineral deposits on adjacent properties are not indicative of mineral deposits on our properties.

**CANADIAN NATIONAL INSTRUMENT 43-101 GUIDE QUALIFIED PERSON:** Mineral Resource and Mineral Reserve estimates and resulting Technical Reports must be prepared by or under the direction of, and dated and signed by, a Qualified Person. A Qualified Person ("QP") means an individual who is an engineer or geoscientist with at least five years of experience in mineral exploration, mine development or operation or mineral project assessment, or any combination of these; has experience relevant to the subject matter of the mineral project and the technical report; and is a member or licensee in good standing of a professional association.



# BUILDING VALUE FROM GROUND UP

At Surface Metals Inc., the building blocks for the future are our focus today.

We have one of the best portfolios of North American projects in areas known for production, development and exploration of gold and lithium. Surface Metals holds a 90% interest in the Cimarron Gold Project in Nye County Nevada, and through its US subsidiary, ACME Lithium US Inc., is advancing and developing a lithium brine resource at Clayton Lake Valley, Nevada. Surface Metals also holds a sedimentary lithium claystone project at Fish Lake Valley, Nevada. Additionally Surface Metals Inc. has entered into a strategic exploration and earn-in agreement with Snow Lake Resources Ltd, a leading partner, at a group of lithium projects in the pegmatite region of Shatford, Birse and Cat-Euclid Lakes in southeastern Manitoba.

## THE RIGHT MARKET



In 2025 Gold soared to record highs at over US\$4000 per ounce

## THE RIGHT ADDRESS



We're in regionally strong areas for growth, development and exploration

## THE RIGHT PEOPLE



Backed by a successful track record on global resource projects



# SURFACE METALS PROJECT AREAS

## NEVADA

### GOLD

#### CIMARRON, NYE COUNTY

90% interest in 31 claims containing a highly prospective exploration project with a drill-indicated historic gold resource (Non NI43-101 compliant) and additional target area with similar mineralized drill intercepts that remain open in several directions

### LITHIUM

#### CLAYTON VALLEY

Lithium brine resource of over 300k tons of LCE (NI 43-101 compliant) at Silver Peak, Esmeralda County. 122 claims held or under option to acquire, totaling 2,440 acres.

### LITHIUM

#### FISH LAKE VALLEY

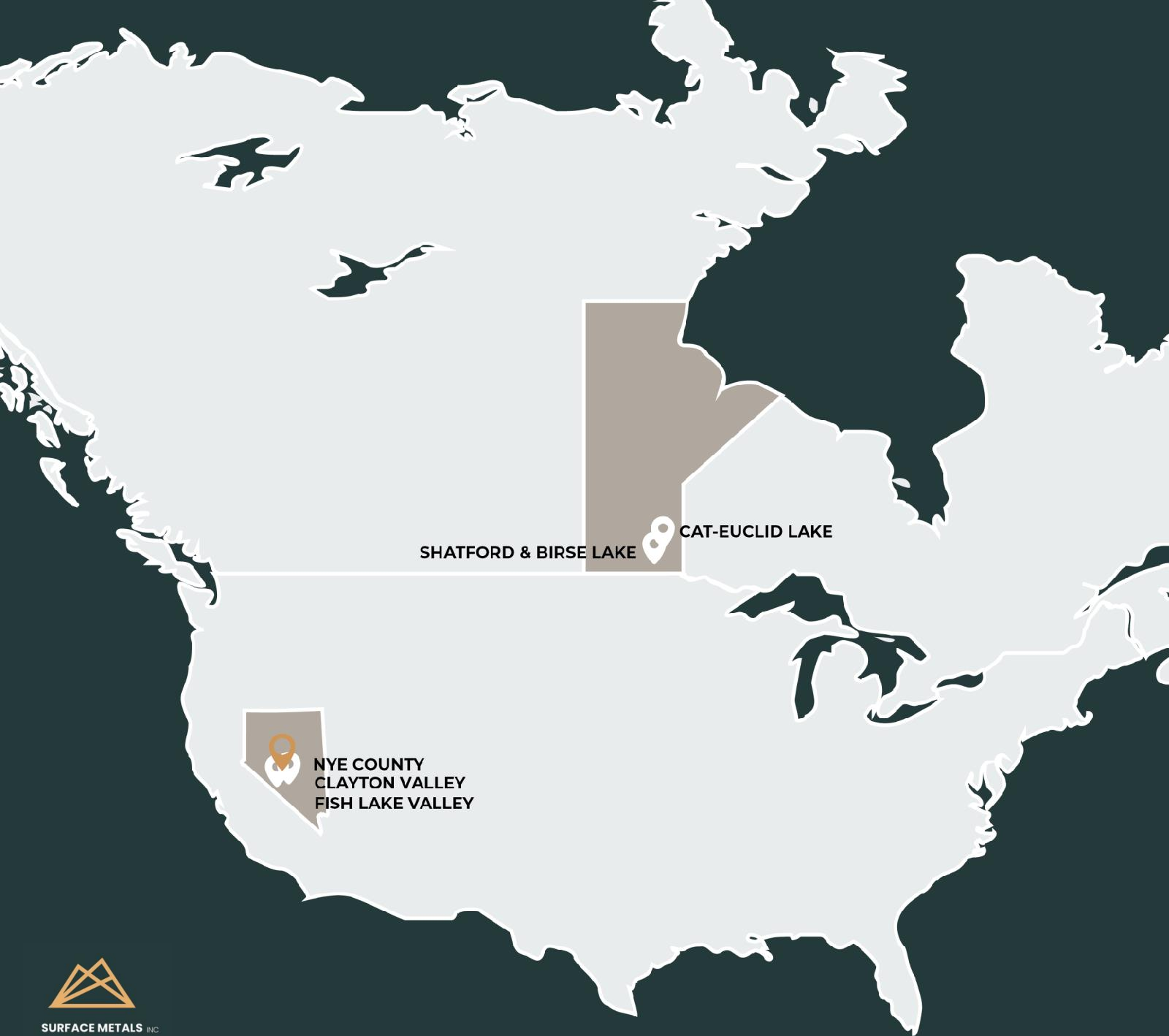
100% interest in sedimentary lithium claystone project with sampled lithium values over 1400 ppm, 82 mining claims held, totaling approximately 1694 acres.

## MANITOBA

### LITHIUM

#### SHATFORD, BIRSE & CAT-EUCLID LAKE

Strategic exploration and earn-in agreement with Snow Lake Resources Ltd, a leading partner (49%), at a group of lithium projects in the pegmatite region of southeastern Manitoba. 37 claims held, totaling 17,009 acres



# NEVADA PROJECTS

## CIMARRON GOLD PROJECT

CIMARRON is located at the north end of the San Antonio Mountains in the historic San Antonio (Cimarron) Mining District, approximately eighteen miles north of the town of Tonopah, in Nye County, Nevada.

### PROJECT HIGHLIGHTS:

- Cimarron comprises 31 unpatented lode mining claims near the historic San Antonio mine workings. Additional claims surrounding the core claims are held by Landore Resources Ltd.
- The Project includes an extensive historic record of drill results (190 holes), which outlined a historic gold resource of approximately 50,000 ounces (Non NI 43-101 compliant)
- Historic high grade intercepts included 11 meters of 4.46 g/t gold, 23 m of 4.49 g/t gold and 46 m of 3.94 g/t gold
- The Project has good access and a number of drill sites already built
- Mineral intercepts remain open in several directions
- The target is a shallow, low sulfidation oxide gold system with strong structural control.



# GOLD: A GENERATIONAL OPPORTUNITY

---

- Historic bull market with gold reaching over US\$4300 per ounce in October 2025
- Goldman Sachs predicts gold could soar to US\$5000 by mid 2026
- Others with positive outlook for gold include JP Morgan, UBS, RBC, and Deutsche Bank
- Inflation, government debt, tariff policies, decreasing interest rates, and global unrest all contribute to investors wanting to seek the value and safety of gold



Goldman  
Sachs

***“Gold remains our  
highest-conviction long  
recommendation.”***

- Goldman Sachs, September 3, 2025



J.P.Morgan



UBS



RBC



Deutsche Bank

# CIMARRON REGIONAL LOCATION

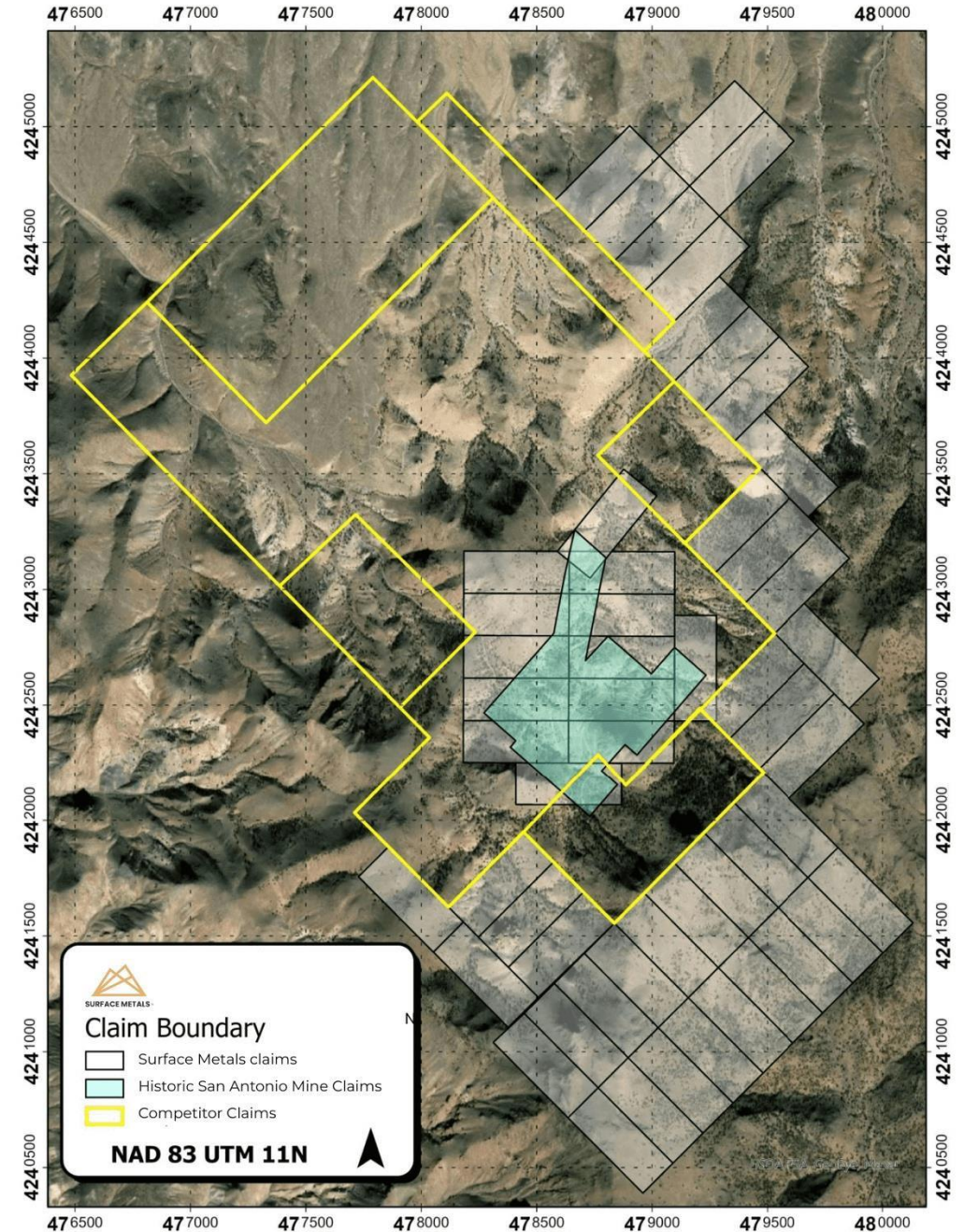
Regionally, the Cimarron Gold Project is at the intersection of two prominent gold trends:

- The Walker-Lane trend which runs approximately NW and hosts a number of mines and the NNE trend of gold mines including Manhattan, Gold Hill, and Kinross's (NYSE:KGC), +US\$29 billion market cap) "world-class" Round Mountain, which is located 28 miles away (45 km)
- At Round Mountain, Kinross has recorded over 15 million ounces of gold poured (as of 2021) worth over US\$55 Billion at current gold prices



# CIMARRON EXPLORATION

- From 1980 to 2004, exploration efforts by companies like Newmont and Echo Bay identified significant gold mineralization in three areas surrounding the Cimarron Mine, with surface and underground assays reporting gold values up to 107 g/t.
- Drill testing conducted by Newmont, Budge, Echo Bay, and Romarco demonstrated a continuity of lower-grade gold mineralization in these areas, with higher-grade intercepts frequently reported.
- Echo Bay estimated in 1987 a total gold resource of over 50,000 ounces within approximately 1,500,000 tons of material across the West, East, and Central Zones, with around 80% of these ounces located in the West Zone. (Non NI 43-101 compliant)
- There is no technical report to support this historical estimate and confirmation drilling will be required.



# TABLE 1 – CIMARRON GOLD

## HISTORIC HIGH GRADE ROCK CHIP SAMPLES

Area	Gold Grade grams/tonne	Area	Gold Grade grams/tonne
Cimarron	106.7	North	16.8
Cimarron	21.9	Breccia	29.2
Cimarron	16.3	West Adit	10.1
Cimarron	9.9	West Adit	12.0
CO8	53.5	West Adit	30.2
CO8	9.2	CO8	8.9

(Bullion River Gold Corp. Fact Sheet, 2004)



# TABLE 2 – CIMARRON GOLD

## SELECTED DRILL INTERCEPTS IN RESOURCE AND TARGET AREAS

Resource Area	Hole	Interval meters	Intercept meters	Au grade g/t	Company
Cimarron East	EB-91	0-11	11	4.46	Echo Bay
Cimarron East	EB-86	10-40	30	2.59	Echo Bay
Cimarron East	EB-30	39-83	44	0.9	Echo Bay
Cimarron East	RCM-242	44-67	23	1.06	Romarco
Cimarron East	RCM-27	43-53	10	2.4	Romarco
Cimarron West	EB-23	45-78.5	3	50.7	Echo Bay
Cimarron West	RCM-270	20-50	30	1.18	Romarco
Cimarron West	c-12	28-51	23	4.49	Newmont
Cimarron West	C-28	0-7	7	5.31	Newmont
Cimarron West	c-92	15-61	46	3.94	Newmont
CO8	RCM-254	60-69	9	4.075	Romarco
North Breccia	RCM-267	18-27	9	1.267	Romarco

(Bullion River Gold Corp. Fact Sheet, 2004)

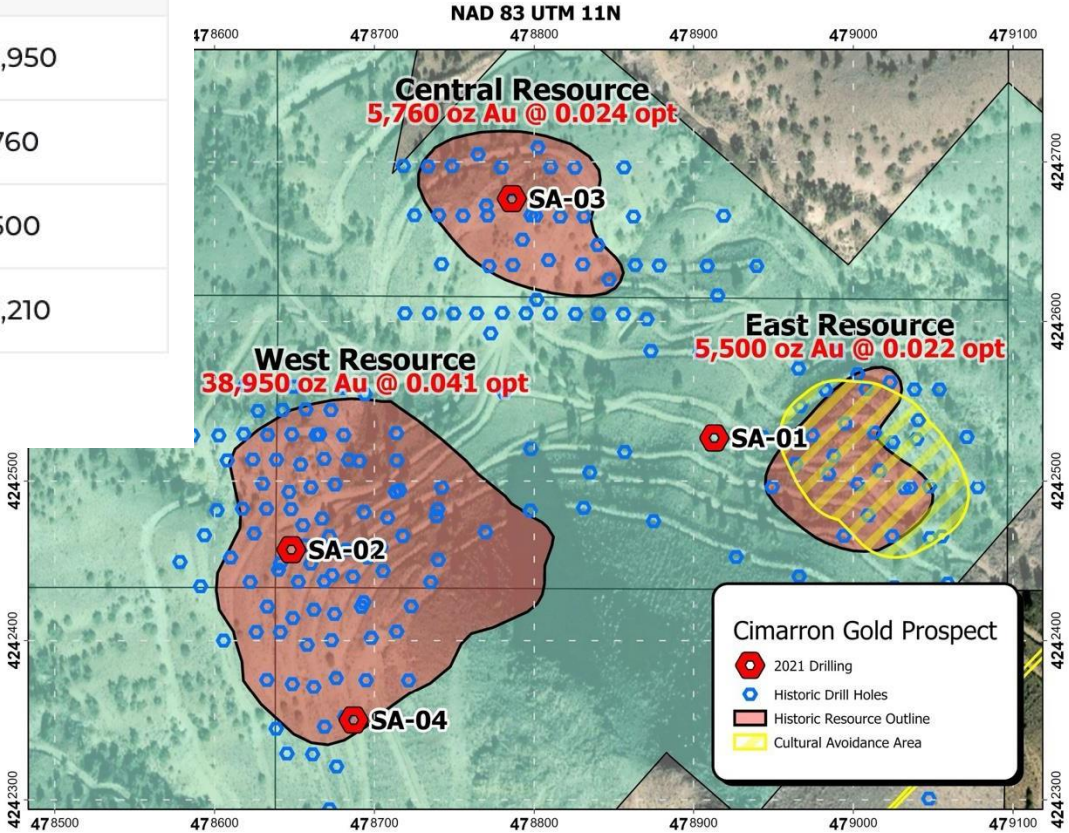


# TABLE 3 – CIMARRON GOLD

## HISTORIC RESOURCE ESTIMATE\*

Zone	Metric Tonnes	Au Grade g/t	Short Tons	Au Grade oz/ton	Ounces
West	1,050,000	1.40	950,000	0.041	38,950
Central	260,000	0.82	240,000	0.024	5,760
East	260,000	0.75	240,000	0.024	5,500
Total	1,570,000	1.31	1,430,000	0.035	50,210

\* (polygonal calculation – A.F. Budge (Mining) Ltd. – 1986)





# OUTLOOK - CIMARRON

Cimarron represents a high-quality early-stage exploration project with a drill-indicated historic resource (Non NI 43-101 compliant) and a second target area with similar mineralized drill intercepts that remain open in several directions.

## QUALIFIED PERSON

Scientific and technical information contained in this document has been reviewed and approved by Bill Feyerabend CPG, who is a “Qualified Person” as defined by National Instrument 43-101 – Standards of Disclosure for Mineral Projects (“NI 43-101”).

## REFERENCES

- Brewer, N.H., 1988, Summary Report: Cimarron Project, Nye County, Nevada Echo Bay Exploration Internal Company Report, 16 p.
- Bullion River Gold Corp., Feb. 2004, Acquisition of Cimarron Mineral Exploration Project – Press Release and Information Fact Sheet.
- Hahn, P.H., 1987, Cimarron, Nye County, Nevada: Review of 1986 Work and recommendations for work in 1987
- A.F. Budge Internal Company Report, 10 p.
- Romarco Minerals Inc, 1996, Annual Report, p. 16.



# LITHIUM

## NEVADA PROJECTS

Esmeralda County, Nevada, is the epicenter of lithium exploration and development in the United States.

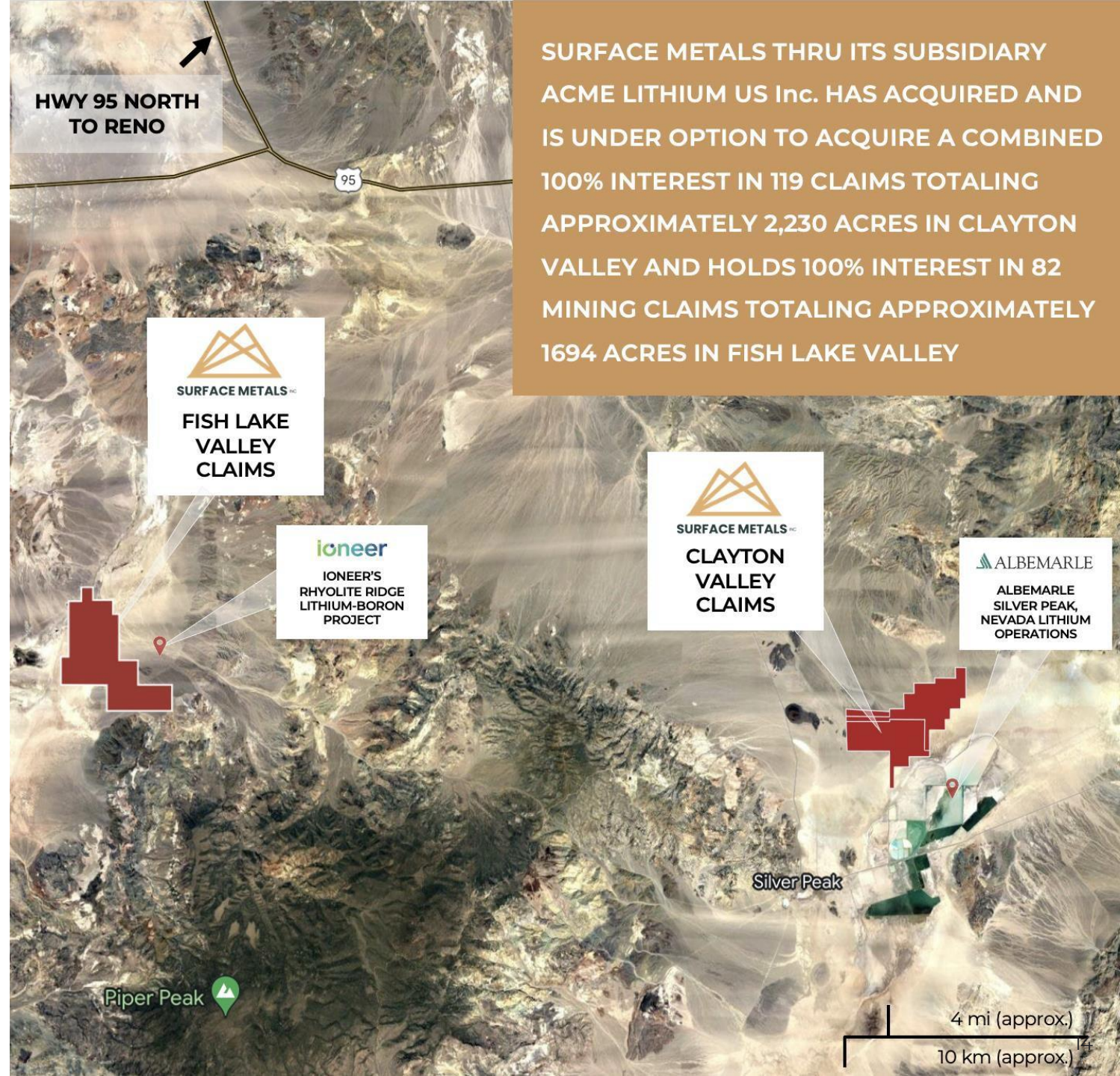
### PROJECT HIGHLIGHTS:

- Surface Metals through its subsidiary ACME Lithium US Inc. ("ACME") has acquired, or is under option to acquire a combined 100% interest in 122 claims totaling 2,440 acres in Clayton Valley and holds 100% interest in 82 mining claims totaling approximately 1,694 acres in Fish Lake Valley
- Nevada is the best mining jurisdiction in America with neighboring world class lithium projects in the region
- Access to expertise, infrastructure, rail and roads, power and water
- Excellent weather, logistics, and access year-round
- Tesla's Gigafactory less than 200 miles northwest

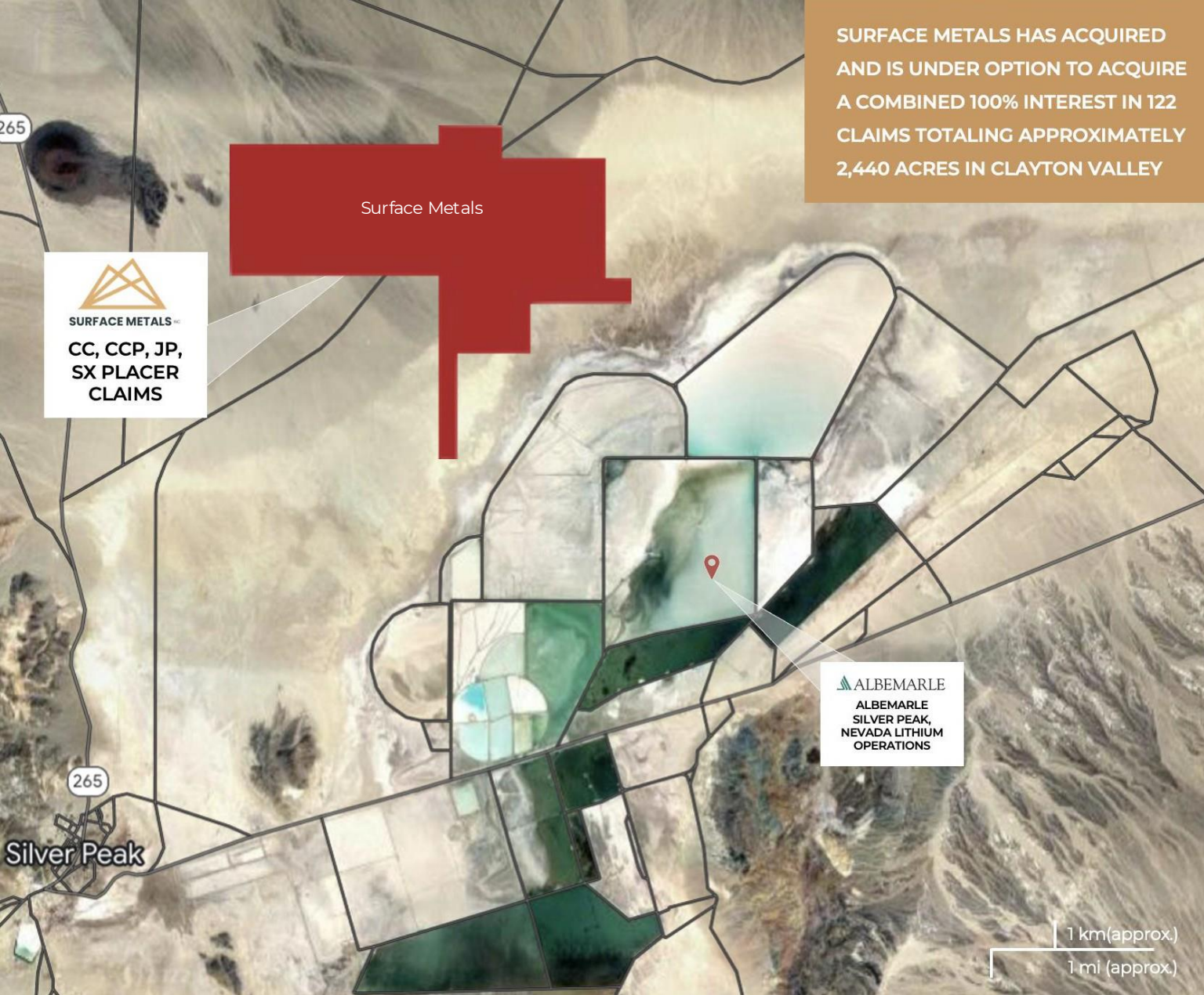


# BUILDING VALUE FROM GROUND UP

- Surface Metals' Clayton Valley project neighbors the Silver Peak lithium mine owned and operated by one of largest lithium producers in the world, Albemarle Corporation (NYSE:ALB)
- Silver Peak is the only current lithium production in the U.S. where lithium has been continuously produced from brines since 1966
- Surface Metals' Fish Lake Valley project neighbors Ioneer Corporation's (ASX:INR) Rhyolite Ridge, a world class lithium clay mining project set to go into construction in 2025.



SURFACE METALS THRU ITS SUBSIDIARY ACME LITHIUM US Inc. HAS ACQUIRED AND IS UNDER OPTION TO ACQUIRE A COMBINED 100% INTEREST IN 119 CLAIMS TOTALING APPROXIMATELY 2,230 ACRES IN CLAYTON VALLEY AND HOLDS 100% INTEREST IN 82 MINING CLAIMS TOTALING APPROXIMATELY 1694 ACRES IN FISH LAKE VALLEY



SURFACE METALS HAS ACQUIRED AND IS UNDER OPTION TO ACQUIRE A COMBINED 100% INTEREST IN 122 CLAIMS TOTALING APPROXIMATELY 2,440 ACRES IN CLAYTON VALLEY

  
SURFACE METALS™  
CC, CCP, JP,  
SX PLACER  
CLAIMS

# CLAYTON VALLEY, NEVADA LITHIUM PROJECT OVERVIEW

- Surface Metals' CC, CCP, JR, and SX Placer Claims in Clayton Valley are found in an area with a rich history and promising future
- The claims cover basin-fill sediments and aquifers similar to sediments currently producing lithium brines in the region
- Extensive valley growth faults may provide an adequate plumbing system to foster brine reservoir accumulation for moving fluids around

# PHASE 1 DRILL PROGRAM AT CLAYTON VALLEY, NV

In June 2022, Surface Metals' launched a Phase 1 Drill Program in Clayton Valley. Harris Drilling Exploration and Associates Inc. was contracted to provide drilling services based on prospective lithium brine targets defined by geophysical work in the Fall of 2021.

Phase  
1

**PROSPECTIVE BASIN SEDIMENTS HAVE BEEN ENCOUNTERED AND DELINEATED AS HIGHLY PROBABLE FOR AQUIFER UNITS**

1,250  
feet

**TARGETED BASAL GRAVEL AQUIFER DEPTH BELOW GROUND SURFACE, WITH MULTIPLE PRODUCTIVE HORIZONS INTERSECTED FOR SAMPLE BRINE COLLECTION**

1,400  
feet

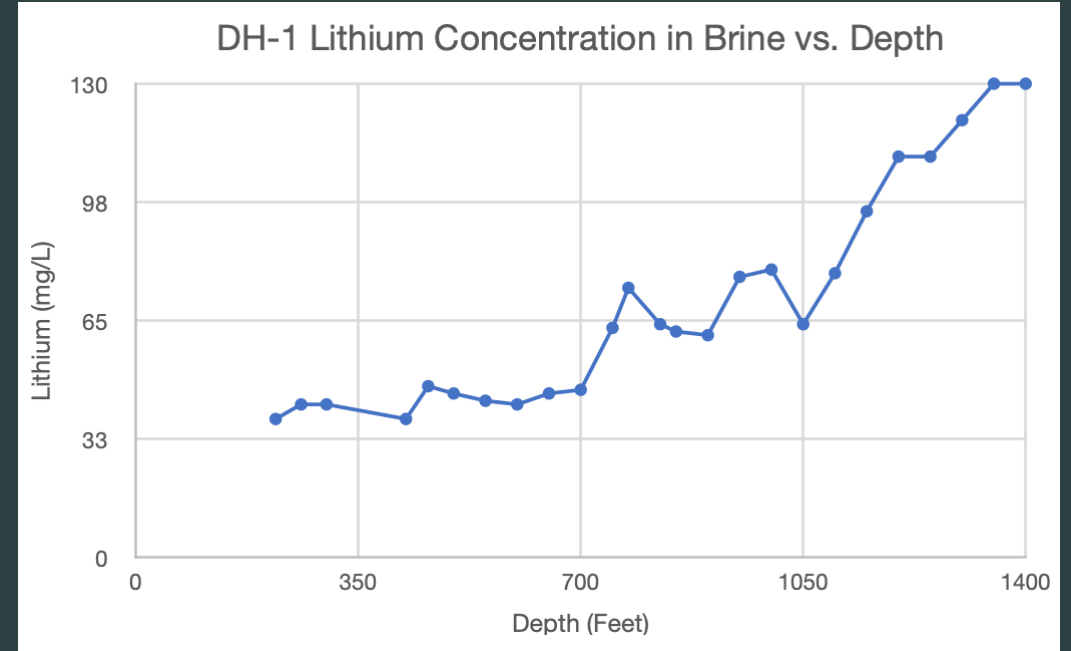
**DRILL HOLE DH-1 DEPTH BELOW GROUND SURFACE; CORE IS CONSISTENT WITH KNOWN BASIN STRATIGRAPHY**

# SIGNIFICANT DISCOVERY AT CLAYTON VALLEY, NV

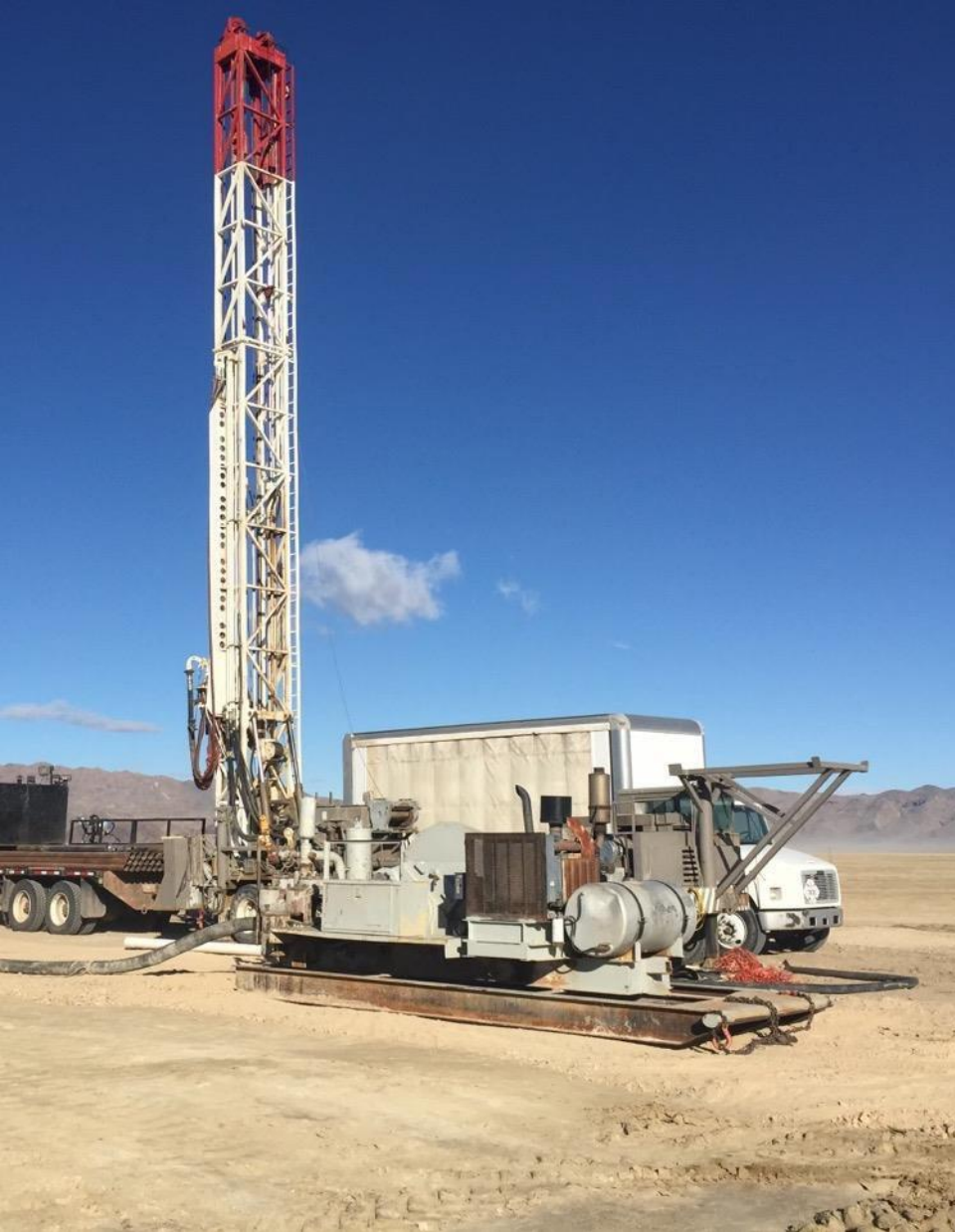
Positive results have been reported following the analysis of brine samples taken from the Phase 1 Drill Program.

## KEY FINDINGS:

- Lithium detected at concentrations ranging between 38 and 130 mg/L
- Results strongly indicate existence of a bicarbonate rich groundwater quality affinity which is typical in Clayton Valley lithium brine aquifers
- Lithium concentrations appear to increase in the vicinity of the deeper lacustrine tuff unit and in deep gravels underlying the tuff near the bottom of the DH-1



**SAMPLES OF BRINE TAKEN FROM DH-1 AT VARIOUS INTERVALS WERE SENT TO AN INDEPENDENT LAB AND ANALYZED FOR LITHIUM AND OTHER ELEMENTS TYPICAL OF LITHIUM ENRICHED BRINE SYSTEMS. ASSAY RESULTS INDICATE LITHIUM CONCENTRATIONS LIKELY INCREASE WITH DEPTH AND WITH TEMPERATURE.**



# PHASE 2 DRILL PROGRAM AT CLAYTON VALLEY, NV 2023

## HIGHLIGHTS:

- Exploration hole to examine deeper horizons through zonal isolated testing, assess stratigraphy, and potential for continuity between stratigraphic units encountered in DH-1, as well as a larger diameter test well and planned pumping test
- Successfully completed 10-day pumping test at test well TW-1 and collected a range of brine samples to be submitted for multi-element chemical analyses, which include total and dissolved lithium

## MILESTONES & INITIAL FINDINGS:

- In March 2024, the Company announced its exploration summary and hydrological evaluation report for its Phase 1 and Phase 2 programs at Clayton Valley
- The NI43-101 report estimates an **inferred lithium carbonate equivalent (LCE) resource of approximately 302,900 metric tons** (units rounded) over a 40 year extraction period based on an assessment of potential extractable brine volume which could be pumped from the project over time

# EMERGING TECHNOLOGY

## DIRECT LITHIUM EXTRACTION

DLE is the technology we expect to use at Clayton Valley to process lithium. It is a low-cost and sustainable technology that extracts lithium from brine water.

- DLE is a more efficient process compared to traditional lithium extraction by selectively removing highly pure lithium from brine in a much smaller manufacturing facility that uses less water
- A few different technologies can be used to achieve this: porous materials that allow for lithium bonding, ion exchange, and solvent extraction
- Surface Metals' is developing relationships with companies that have DLE technology
- SLB (formerly Schlumberger) successfully demonstrated a DLE pilot plant near our Clayton Valley Project



# FISH LAKE VALLEY, NV PROJECT OVERVIEW

## UP TO 1418 PPM SURFACE LITHIUM VALUES

The highest found to date in March 2023, confirms historical and new lithium occurrences on the property

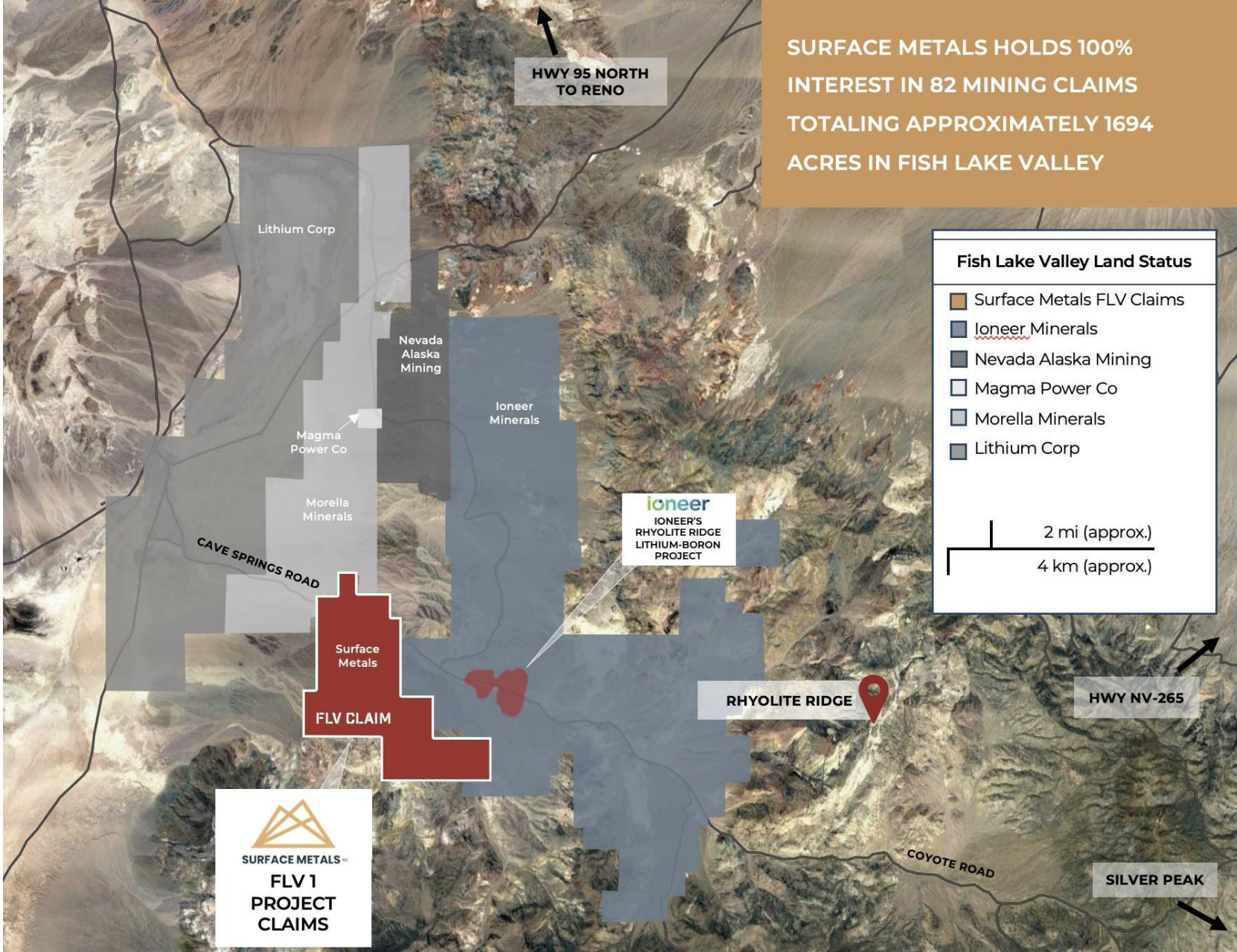
## LITHIUM WITHIN SEDIMENTARY HORIZONS

Can potentially be recovered under reasonable metallurgical conditions

## BILLION-DOLLAR PROJECT TO THE EAST

Neighbor to Ioneer's world class Rhyolite Ridge Lithium-Boron Project that:

- Recently announced a mine loan of up to US\$986 million from the Department of Energy
- Entered agreements with Ford, Toyota, and Panasonic to supply lithium for EV battery production in the U.S.
- Set to go into construction in 2025/26



SURFACE METALS HOLDS 100% INTEREST IN 82 MINING CLAIMS TOTALING APPROXIMATELY 1694 ACRES IN FISH LAKE VALLEY



# FIELD REVIEW AND SAMPLING AT FISH LAKE VALLEY, NV

Phase 1 and 2 Field Reviews And Sampling indicate a mineral process was active during deposition of the underlying sediments.

## PHASE 2 GEOLOGICAL FIELD WORK

- Launched in Q4 2022 with a focus on traverses along a major drainage area where higher lithium values occurred
- Findings show certain beds are enriched in lithium

## PHASE 2 SAMPLING

- Launched in February 2023, utilizing Asterra's satellite-based technology
- Discovered the highest surface value to date at 1418 ppm and numerous new occurrences of lithium values over 1200 ppm
- Discovered boron anomalies up to 1964 ppm occurring and adjacent to surface lithium anomalies

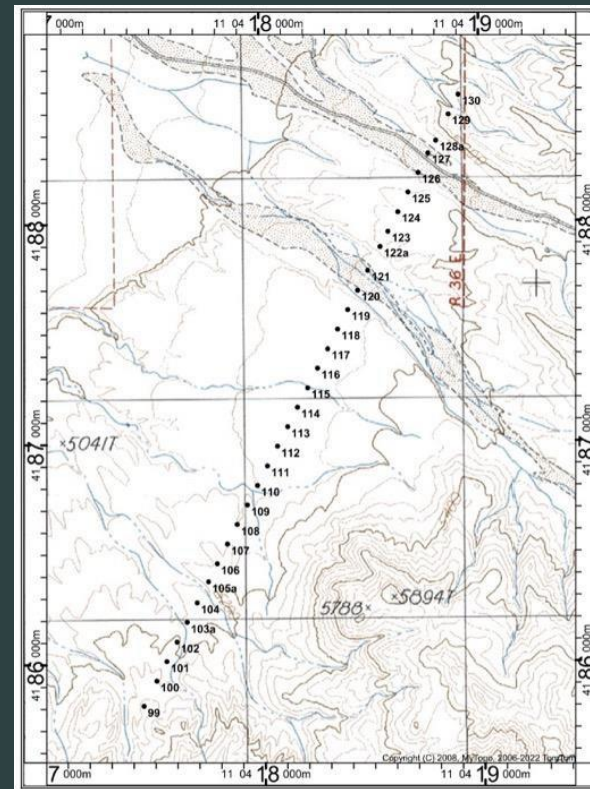
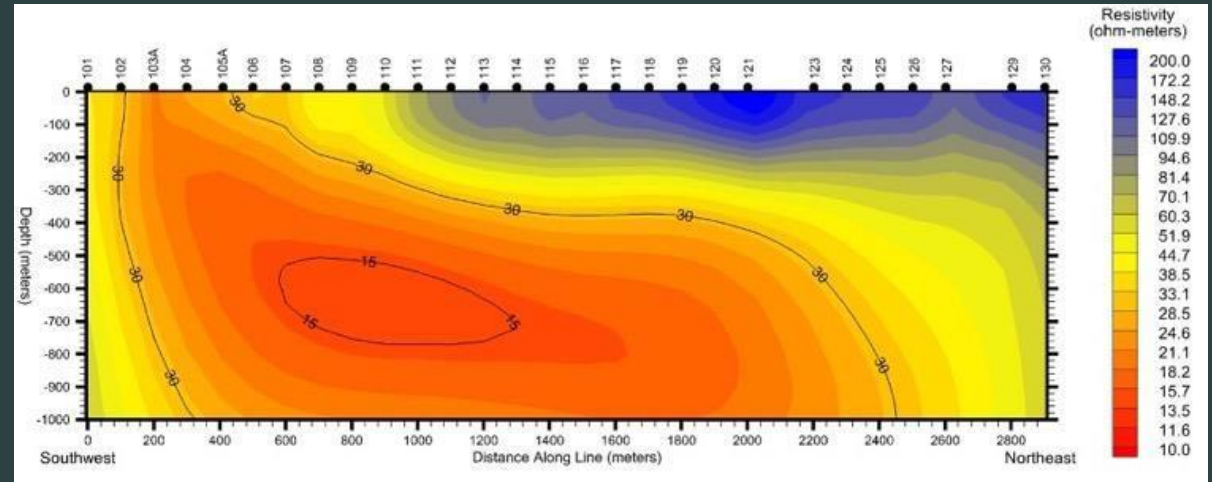


# GEOPHYSICS AND NEXT STEPS AT FISH LAKE VALLEY

Findings indicate the project is drill-ready and drilling has been recommended to determine the relationship between the different interpreted concentrations of clay sediments and the presence of lithium.

## HYBRID-SOURCE AUDIO-MAGNETOTELLURICS SURVEY FINDINGS:

- Completed in November 2022
- A basin fault is evident near the southwestern end of the profile, with modeled depths to Paleozoic bedrock ranging from about 1.3 km to 1.9 km
- Moderate to low concentration clay sediments are interpreted to be present at the surface near the southwestern basin fault that deepen to about 300 meters and extend beyond a depth of one km over about 80% of the profile
- Higher concentration clay sediments are interpreted over about 700 meters with depths ranging from about 500 to 750 meters



**GRAVITY SURVEY INDICATES PRESENCE OF A DOWN-DROPPED BASIN WITH INTERPRETED TARGET CLAY SEDIMENTS POTENTIALLY TARGETING SIMILAR ILLITE-SMECTITE UNITS IDENTIFIED IN THE NEARBY RHYOLITE RIDGE LITHIUM DEPOSIT**

# CANADA

## MANITOBA PROJECTS

The Bird River Greenstone Belt in southeastern Manitoba, Canada: A global area of focus and opportunity for emerging and developing lithium projects.

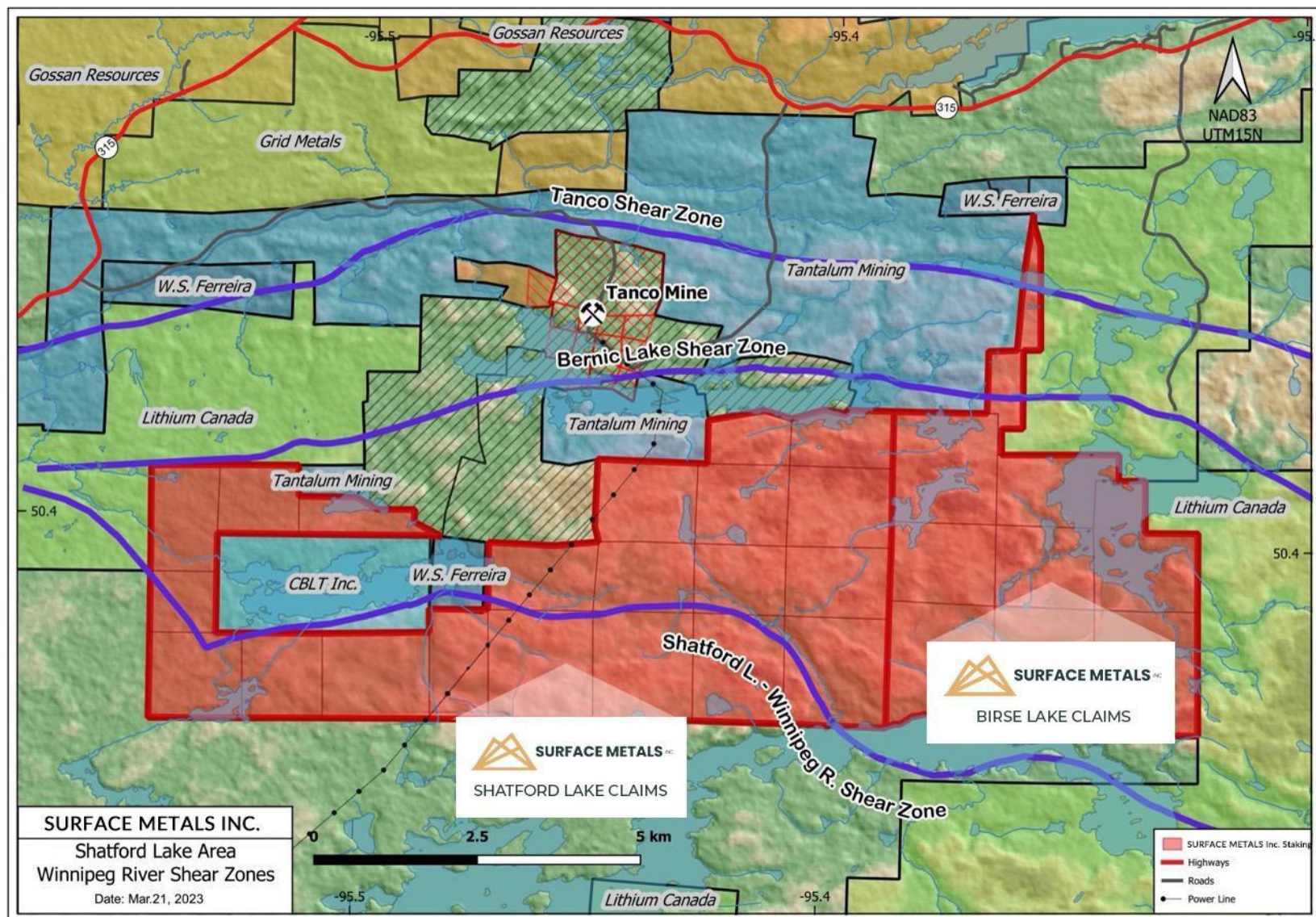
### HIGHLIGHTS

- The region hosts hundreds of individual pegmatite bodies, many of which are classified as complex rare-element Lithium-Cesium-Tantalum (LCT) pegmatites
- The projects neighbor the world class Tanco Mine, purchased by Sinomine Corporation in 2019
- Surface has granted Snow Lake Resources the option to earn up to a 90% interest in 37 mineral claims totaling approximately 17,000 acres (70 square km) over a two-year period for its project claims at Shatford, Birse, and Cat-Euclid Lake. Snow Lake has earned into 51% to date.



# MANITOBA: SHATFORD AND BIRSE LAKE PROJECTS OVERVIEW

- Located in the southern limb of the Bird River Greenstone Belt in Manitoba Canada, Surface's Shatford Lake project is comprised of 21 claims totaling approximately 8,883 acres
- Contiguous and directly east of the Shatford Lake project claims, our Birse Lake project is comprised of 10 claims totaling approximately 5,196 acres
- The claims straddle a 15-kilometer structural trend of the Greer-Shatford Shear Zone, with numerous pegmatite dykes, favorable host rocks, and pegmatite occurrences along its periphery
- Tanco Mine borders the northeast corner of the Shatford Lake claims





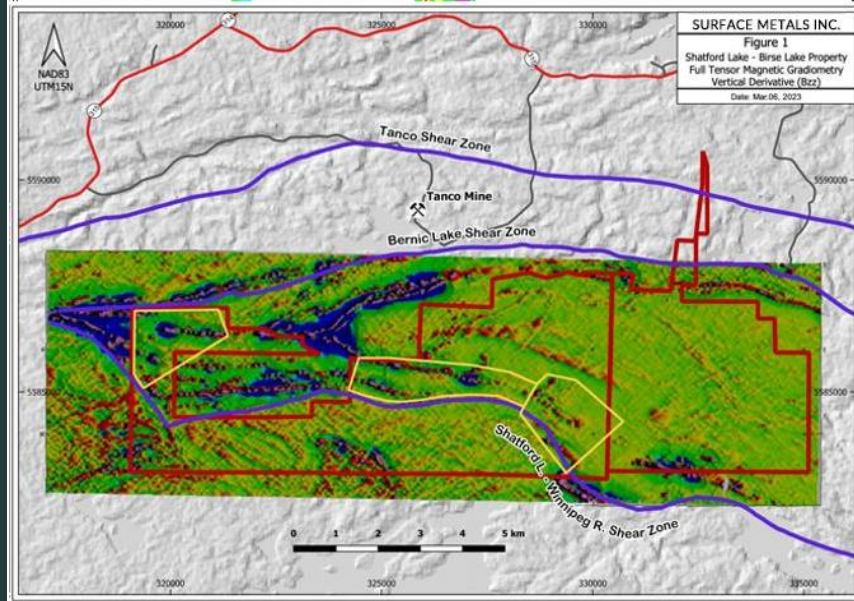
# MANITOBA CANADA: PAST EXPLORATION

Extensive sampling and geophysics program took place in the summer of 2022.

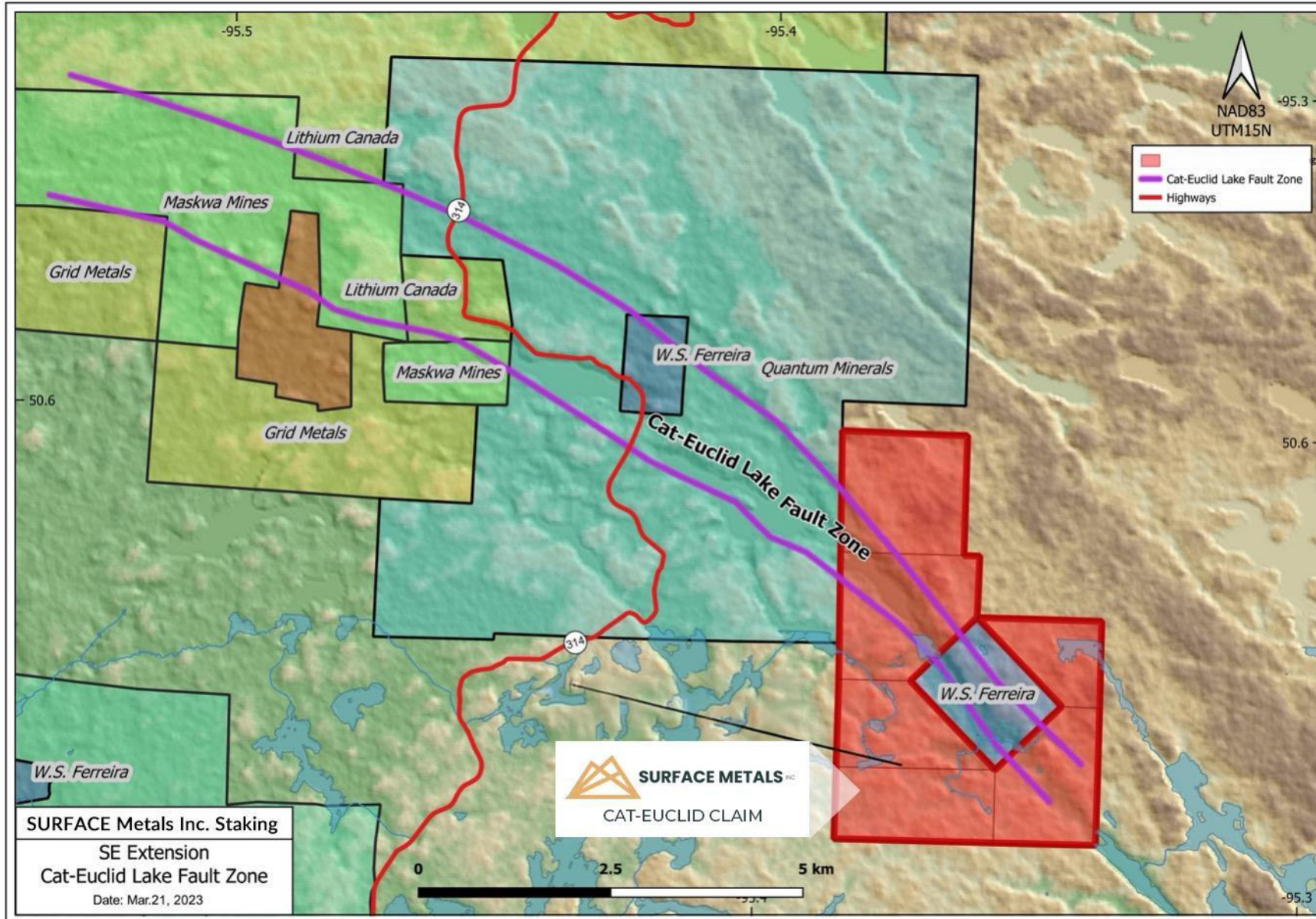
Drilling commenced at Shatford Lake in January 2023 based on findings from the Summer Exploration Program and the Winter 2023 Drill Program was completed in April 2023.

## HIGHLIGHTS:

- Exploration agreement signed with the Sagkeeng First Nation
- Drill targets from multiple sites identified include numerous pegmatites, some of which were undocumented prior to the Summer Exploration Program
- Confirmed high priority drill targets in March 2023 at West Shatford, Central Shatford, and Southeast Shatford areas based on 3D modeling of Dias Airborne's QMAGT data
- Eight holes were completed totaling 3,280 m of diamond drilling
- 235 samples have been cut for assay, with results pending
- Pegmatites were encountered in 6 of 8 holes and previously unknown relatively fine-grained intrusive rocks indicate the possible occurrence of unexposed potential source plutons for lithium-bearing pegmatites
- Drill Program demonstrated magnetic signatures mapped both stratigraphy and structure related to the LCT pegmatite targets
- Drilling confirmed in three locations that lineaments mainly orientated at 45 degrees are parallel to the lineament associated with the Tanco pegmatite
- Zones of structural extension and dilation are prime targets for possible pegmatite intrusion



# MANITOBA CANADA: CAT-EUCLID LAKE PROJECT OVERVIEW



- 6 claims totaling approximately 2,930 acres in the northern limb of the Bird River Greenstone Belt
- The claims straddle the prospective Cat-Euclid Lake shear zone and extend along southeasterly trend of known pegmatite occurrences
- World leading lithium producer Australia's Mineral Resources Limited (MRL) found west of the project

# SNOW LAKE RESOURCES

## Manitoba Canada Joint Venture

---

Under the earn-in joint venture, the 2024 field exploration season conducted by Snow Lake Resources Ltd., dba Snow Lake Energy (Nasdaq: LITM) ("Snow Lake") on the Shatford Lake Project in southeastern Manitoba was successfully completed.

### HIGHLIGHTS:

- 2024 prospecting/reconnaissance program successfully completed
- Results included the discovery of numerous pegmatites under heavy overburden
- Significant discovery of a ~25 – 30-meter-wide tantalite-bearing pegmatite on the Cat-Euclid Lake claim block, indicating the potential for lithium, cesium, tantalum mineralization north of the neighbouring Tanco Mine
- Multiple new drill targets identified



# MANAGEMENT TEAM & ADVISORY BOARD

---

## **STEPHEN HANSON**

DIRECTOR, PRESIDENT AND CEO

Over 30 years of finance and corporate development experience across four continents, has held executive (CEO), board and advisor positions for numerous private and public companies in mining, alternative energy, oil and gas sectors. He has been involved in a number of successful M&A transactions including exit strategies with major corporations.

## **VIVIAN KATSURIS**

DIRECTOR

A specialist in corporate development, management, consulting, and corporate services. Has over 30 years of financial experience in the brokerage industry, the North American capital markets and public financings; holds director and officer positions with several CSE and TSXV listed companies.

## **YANNIS TSITOS**

DIRECTOR

Originally a physicist-geophysicist with over 30 years of experience in the mining industry, including 19 years with BHP Billiton group, one of the biggest mining companies in the world. Currently the President of Goldsource Mines Inc., a TSXV listed company and sits on several boards as an independent director.

## **ZARA KANJI**

CHIEF FINANCIAL OFFICER AND CORPORATE SECRETARY

Experienced in financial reporting compliance for junior listed companies, taxation, general accounting, financial reporting and value added advisory services for individuals, private and public companies. A member of the Chartered Professional Accountants of BC and Canada.

## **WILLIAM FEYERABEND**

QUALIFIED PERSON FOR US PROJECTS (QP)

A Certified Professional Geologist and a member of the American Institute of Professional Geologists with direct working experience in the exploration and development of lithium projects, including technical reports in Nevada. Has worked on projects in American West, Mexico and South America.

## **DANE BRIDGE, P. GEO.**

TECHNICAL ADVISOR

A Professional Geoscientist registered with the Association of Engineers and Geoscientists of the Province of British Columbia with over 45 years of international experience in mineral exploration, deposit evaluation, and mine operations.

## **MATT BANTA, PH**

TECHNICAL ADVISOR

Over 20 years of technical and professional experience in groundwater and surface water resource investigations, inventories, water development projects, testing, and resource management with focus on lithium brine, open pit, and underground mining projects.

# INVESTMENTS HIGHLIGHTS

---

## **EXTENSIVE PORTFOLIO OF MULTIBILLION DOLLAR OPPORTUNITIES**

in growing mining sectors

## **EPICENTER OF EXPLORATION & DEVELOPMENT**

with multiple projects in known regions of gold and lithium production and development: Nevada U.S., and Manitoba, Canada

## **EXPLORATION TO DISCOVERY TO RESOURCE**

Drill ready projects with positive geophysical and geological attributes, NI 43-101 lithium resource

## **EXPERIENCED MANAGEMENT TEAM**

who have built and financed resource companies around the world



# CAPITAL OVERVIEW

CSE	SUR
OTCQB	SURMF
SHARES ISSUED AND OUTSTANDING	45,359,245
WARRANTS	15,109,334
OPTIONS	3,108,333
FULLY DILUTED	63,576,912

## LEGAL

Owen Bird Law Corporation  
Bentall 3 Suite 2900, 595 Burrard Street  
Vancouver, BC Canada V7X 1J5

## AUDITOR

Charlton & Company,  
Chartered Professional Accountants  
Suite 1735 – 555 Burrard Street  
Vancouver, BC Canada V7X 1M9

## TRANSFER AGENT

Odyssey Trust Company  
323 – 409 Granville Street  
Vancouver, BC Canada V6C 1T2

# CONTACT US

---

1-604-564-9045

[INFO@SURFACEMETALS.COM](mailto:INFO@SURFACEMETALS.COM)

## **SURFACE METALS INC.**

318 – 1199 WEST PENDER ST  
VANCOUVER, BC  
V6E 2R1

## **ACME LITHIUM US INC.**

318 N CARSON ST #208  
CARSON CITY, NV  
89701 USA

**CSE: SUR | OTCQX: ACLHD**

